



UNLIMITED TENDER INVITATION

(No. 13-DPZBP-2022)

**EXALO Drilling S.A. invites your Company to submit an offer in an Unlimited Tender for
the sale of "Skytop Brewster TR 800" drilling rig.**

Zielona Góra; 02.11.2022 r.

13-DPZBP-2022

Dear Sir/Madam,

On behalf of Exalo Drilling S.A. I would like to invite Your Company to submit an offer for the sale of "Skytop Brewster TR 800" drilling rig.

On further pages, You will find a short instruction, how to prepare and submit the bid.

In case of any questions please do not hesitate to contact our office via przetargi@exalo.pl .

Regards

LIST OF CONTENTS

1. SUBJECT OF TENDER	4
2. PREPARATION OF VALID BID – GENERAL RULES.....	4
3. CONTENTS OF THE OFFER.....	4
4. SUBMITTING THE BID	5
5. QUESTIONS AND CLARIFICATIONS	6
6. MODIFICATION OR WITHDRAWAL OF THE OFFER.....	7
7. BIDS OPENING AND INITIAL EVALUATION	7
8. EVALUATION OF BIDS.....	7
9. EXCLUDED BIDDERS.....	8
10. DEPOSIT	9
11. OTHER.....	10

APPENDICES

Appendix No. 1 – Technical Specification

Appendix No. 2 – Price Form

Appendix No. 3 – Draft of the Sales Agreement

Appendix No. 4 – Bidder statement

1. SUBJECT OF TENDER

- 1.1 The main goal of the tender is to select a Buyer who will purchase Skytop Brewster TR 800 drilling rig.
- 1.2 Description of the subject of the tender is presented in Technical Specification attached to hereby invitation as Appendix No. 1.
- 1.3 Collection of the rig shall be performed on EXW (Incoterms 2020,.) terms. Location: MB Trans Yard, Zhanazhol Filed, Aktobe Province (N48° 21' 31" ; E 57°28'43"), Kazakhstan.
- 1.4 All costs related to the performance of the contract, including the cost of collection of the subject of the contract, dismantling, transport and insurance costs shall be borne by the Buyer.
- 1.5 Variant offers are not allowed.
- 1.6 Presence of Bidders is not allowed during the tender opening.
- 1.7 Tender is conducted only in English language.
- 1.8 Tender is governed by the laws of Republic of Poland.

2. PREPARATION OF VALID BID – GENERAL RULES

- 2.1. Each Bidder may submit only one offer.
- 2.2. A bid should contain all documents indicated in point 3 of tender invitation document.
- 2.3. The bid and enclosed documents must be prepared in English, and signed by the Bidder or person(s) authorized to make obligations on behalf of the Bidder.
- 2.4. The bid has to be accompanied by a power of attorney, unless the authorization to represent the Bidder stems from other documents enclosed by the Bidder for example Company Register Document.
- 2.5. **Inspection of the Skytop Brewster TR 800 rig is available between 02.11.2022 – 02.12.2022 on working days from from 7:00 a.m. to 2:00 p.m. (GMT+ 6). Willingness to perform an visual inspection should be made by phone +7 701 538 7275 or e-mail to the following address: przetargi@exalo.pl, min. 3 days before the visit.**

3. CONTENTS OF THE OFFER

Below you will find detailed description what kind of documentation is required to prepare the valid bid. Please make sure that you have included all documents requested. If any documents from mandatory sections are missing we reserve the right to reject the Offer.

Offer has to contain the following three mandatory sections with such documentation as:

Section 1.	<p>Price Form attached as Appendix 2, which provide such information as:</p> <p>a) net price – expressed in USD,</p> <p>NOTE:</p> <p><u>Net price cannot be lower than starting price set by Seller, which is 900 000 USD \$ netto + VAT if payable.</u></p>
------------	--

	<p>b) collection time (counting from the date of contract signing) - expressed in days – no later than 30 days after payment of the full price; collection after payment of the full price,</p> <p>c) validity of the offer - minimum 90 days, counting from the deadline for bid submission</p> <p>d) Payment Scheme - preferred by Exalo: 100% due within 30 days after signing the Agreement.</p>
Section 2.	Bidder statement attached as Appendix No 4.
Section 3.	Bidder's Company Register Documents and (if needed) a power of attorney confirming the authorization to represent the Bidder. All documents must be presented in English language.
Section 4.	Confirmation of payment of the tender deposit by the Bidder, as per point 10 of hereby Tender Invitation.

4. SUBMITTING THE BID

- 4.1 The required documents must be submitted electronically. Each page has to be numbered and signed by authorised person.
- 4.2 In order to submit the bid properly, please follow the below steps:
- 1) Scan signed by authorised person documentation of offer, to pdf file and name it as:
13-DPZBP-2022 [BIDDER'S COMPANY NAME]_Offer
 - 2) **Protect pdf file against unauthorized opening by setting a PASSWORD.**
 - 3) Send pdf file (offer), protected by unauthorized opening, in one e-mail to address:
przetargi@exalo.pl.

The deadline for bid submission is:

05 December 2022 – 23:59 (CET)

NOTE:

**DO NOT SEND THE PASSWORD TO FILES IN THE E-MAIL WITH BID.
SUBMITTING THE PASSWORD WITH BID FILES OR BEFORE BELOW DATE WILL CAUSE
AUTOMATIC REJECTION OF THE OFFER**

- 4) Send **PASSWORD** for opening the bid files to e-mail address: przetargi@exalo.pl

Password has to be sent next day after bid submission, it is:

06 December 2022 – between 00:01 -
23:59 (CET)

If the Bidder fails to send the password in the deadline specified above, Seller may request the Bidder to send the password in an additional period, but no later than at the time of opening the offers.

5. QUESTIONS AND CLARIFICATIONS

- 5.1 Questions, request for clarifications and also remarks for draft of sales agreement shall be send only via e-mail for: przetargi@exalo.pl . E-mail subject should be as follows: 13-DPZBP-2022 (Bidder Name) – Clarifications.
- 5.2 Our Answers and Clarifications (if needed-amendments) will be distributed to all invited bidders within maximum 7 (seven) business days. It is not allowed to send questions, requests for clarifications or modifications for 7 (seven) business days before bid submission date.
- 5.3 Seller may extend the deadline for bids submission, taking into account the time that Bidders will need to implement changes to the offers resulting from the Answers/ Clarifications/ Amendments to the Tender Invitation (as well as to the draft of the sales agreement). The Seller, upon own or Bidder's initiative may also modify terms of the tender as well as sales agreement draft but no later than 7 (seven) business days before the bid submission date.
- 5.4 Regardless of the preceding point, the Seller on his own initiative or at the Bidder's request or in other cases specified in this Tender Invitation, may extend the deadline for submitting Offers.
- NOTE: Requests for modifications of Draft Sales Agreement can be done only at this stage. Bidder by submitting the offer accepts the final Sales Agreement Draft determined during the tender procedure. The Buyer and the Seller cannot enter into agreement with different contents to the one established at the moment of deadline for bid submissions. In case the Bidder whose offer was chosen by Exalo refuses to sign the agreement or proposes changes to the agreement, the offer may be rejected or the Tender may be cancelled and such bidder may be restricted from participation in a new tender for the same or similar scope.
- 5.6 In case of an extension of the deadline for submission of Offers, the Bidders shall be obliged to extend the period of being bound by the Offer by the same period of time as the extension of the deadline for submission of Offers.

6. MODIFICATION OR WITHDRAWAL THE OFFER.

- 6.1 The Bidder may modify or withdraw the Offer until the date indicated as a deadline for bids submission.
- 6.2 The statement of modification or withdrawal, has to be sent in electronic form. Files name and message title has to be marked as: 13-DPZBP-2022_MODIFICATION OF THE OFFER_[**BIDDER'S COMPANY NAME**] or 13-DPZBP-2022_WITHDRAWAL OF THE OFFER_[**BIDDER'S COMPANY NAME**].
- 6.3 The statement of modification/withdrawal, has to be submit to email to address: przetargi@exalo.pl, in accordance with point 6.1 and 6.2.

7. BIDS OPENING AND INITIAL EVALUATION

- 7.1 The Seller (without the participation of Bidders) will open Offers after the deadline for their submission).
- 7.2 The Seller will first determine whether the Offers are complete and contain all required documents specified in point 3. Then The Seller will check whether all conditions for participation in the Tender are met, whether all documents were properly numbered, signed and stamped.
- 7.3 If the Seller finds that the Offer has formal shortcomings, he reserves the right to individually request the Bidders to clarify, change or amend the Offers within the time limit set by the Seller. If the Offer will not be corrected or amended within the time set by the Seller or if the Bidder fails to provide explanations regarding the content of the submitted Offers, the Bidder may be excluded from the proceedings. This will result in the rejection of the Offer.

8. EVALUATION OF BIDS

- 8.1. The Bids will be evaluate according to 1 (one) criteria, which is Price:

Points for criteria Price will be calculated according to following formula:

$$P_{C1} = \frac{W_{max}}{W_o} \cdot 100$$

where:

- P_{C1} – total points for offer in price criteria
 W_{max} – highest price net received in tender
 W_o – offer Total net Price

- 8.2. The Seller shall provide the Bidder whose offer was considered the best a notice of selection as the Buyer with an indication of the final scope of the Sales Agreement. The Agreement shall be signed at the date and place indicated by the Seller.
- 8.3. If the Bidder, whose Offer was selected, refuses to enter into the Sales Agreement, the Seller shall request the Bidder, whose Bid was the most advantageous from among the remaining Offers, to enter into the Sales Agreement unless the period of being bound by the Offer has not expired.

8.4. After signing the Sales Agreement, the Seller shall notify the remaining Bidders of the completion of the bidding process, without disclosing the contents of the Offers or which Bidder was selected as the Buyer.

9. EXCLUDED BIDDERS

9.1 Following entities cannot participate in the tender as the Bidders:

- a) Members of the Management Board and Supervisory Board of the Exalo Drilling S.A.;
- b) Business entity conducting the tender and Members of its Management Board and Supervisory Board;
- c) Persons entrusted with the performance of activities related to the conduct of the tender;
- d) Spouse, children, parents and siblings of persons indicated in letters a-c above,
- e) Persons who are in such a legal or factual relationship with the entity conducting the tender that it may raise justified doubts as to the impartiality of the entity conducting the tender

9.2 The following Bidders will be excluded from the tender:

- a) for which liquidation has been opened, the dissolution procedure has been initiated or the bankruptcy of which has been announced or which has suspended the performance of business activities,,
- b) who submitted false information that has or may have an impact on the result of the procedure,
- c) who is in arrears with the payment of taxes, fees, social or health insurance contributions, except for cases when he has obtained the exemption, deferment or distribution provided for by law for installments of overdue payments or suspension of the entire execution of the decision of the competent authority,
- d) being an entity who has been legally convicted of a crime against the environment, a crime of bribery, an offense against economic trade or another crime committed for financial gain, as well as a fiscal crime or the crime of participating in an organized group, committed in connection with the contract award procedure, or a association aimed at committing a crime or a fiscal offense,
- e) if an incumbent member of its management or supervisory body, a partner in a general partnership or a partnership, or a general partner in a limited partnership or limited joint-stock partnership has been legally convicted of an offense against the environment, a crime of bribery, an offense against economic turnover committed in connection with the contract award procedure or other offense committed for the purpose of obtaining financial gain, as

well as a fiscal offense or the offense of participating in an organized group or association aimed at committing a crime or fiscal offense ,

- f) being a collective entity against which the court has ruled a ban on applying for contracts on the basis of the provisions on the liability of collective entities for acts prohibited under penalty,
- g) who submitted false information that has or may have an impact on the result of the proceeding,
- h) who does not meet the conditions specified in the Tender Invitation or did not submit or complete the required documents or declarations confirming the fulfillment of the conditions for participation in the procedure or did not provide explanations regarding the submitted Offer within the prescribed period,
- i) who has not agreed to extend the period of being bound by the Offer,
- j) who did not send a password-protected Offer within the prescribed period by e-mail or password, or has sent the Offer together with the password in one e-mail,
- k) who submitted an Offer with reservations,
- l) who submitted a variant Offer,
- m) who has not accepted the draft of Agreement,
- n) who did not provide explanations in the case the abnormally low or abnormally high price or if the assessment of the explanations confirms that the Offer contains an abnormally low or abnormally high price.

9.3 Buyer can also exclude a Bidder from the Tender in weak financial condition, which, in the opinion of the Buyer, does not guarantee the proper performance of the Agreement

10.DEPOSIT

10.1. The Buyer is obliged to provide, before the deadline for bid submission a deposit, which should cover at least the entire offer binding period indicated in the tender invitation. The deposit is established at 45 000 \$ (in words: forty five thousands USD).

10.2. Deposit is paid only in form of money bank transfer. The effective date of payment of the deposit by bank transfer will be determined by the date of receipt of the funds on the Seller 's bank account indicated in point 10.3.

10.3. The deposit should be paid to the bank account at Bank Gospodarstwa Krajowego with the number IBAN: PL09 1130 1088 0016 0075 5220 0003; BIC/SWIFT: GOSKPLPW; with the annotation: „13-DPZBP-2022_ Skytop Brewster TR 800 – tender deposit”. The Bidder should

attach to the offer an electronic copy of the confirmation of the transfer to the Selling Party's bank account.

- 10.4. The deposit submitted by the bidders will be returned within 14 working days after the Sale Agreement is concluded, withdrawal, cancellation or closing the tender. Seller shall retain deposit of the winning bidder for the account of the price of the sold rig.
- 10.5. The deposit will also be returned at the request of the Bidder (within 3 days from the date of its submission) who withdrew the Bid before the deadline for submission of Offer or who was excluded from the procedure or whose Offer was rejected.
- 10.6. Seller will retain the deposit if the selected Bidder refuses to sign the contract under the conditions specified in the Tender, as well as when the winning Bidder who signed the contract refuses to pay the remaining part of the price.

11. OTHER

- 11.1. We reserve the right to cancel Tender Procedure at any stage without the obligation to inform Bidder about the reasons.
- 11.2. The Bidder bears all costs related to preparation and delivery of Tender Documentation.
- 11.3. Seller reserves the right to include in the final content of the Sales Agreement provisions more favourable to the Seller than those provided in Appendix 3, if such conditions were proposed by the Bidder. In particularly justified cases, the Seller reserves the right to enter into the final content of the Sales Agreement provisions less favourable to the Seller than those provided in Appendix no. 3.
- 11.4. The Offer binding period is a minimum of 90 days, and the period begins with the deadline for Bids submission.
- 11.5. The Buyer reserves the right to cancel Limited Tender Procedure at any stage without the obligation to inform Bidder about the reason for cancelation.
- 11.6. The Bidder shall not pursue any claim against the Buyer for any damages arising as a result of the cancellation of the proceedings or the closing of the proceedings without the selection of any offer by the Buyer.
- 11.7. Attachment of any Bidders terms and conditions to the submitted offer is not allowed. Such documents will not be binding on the Buyer.
- 11.8. NOTE: In case of any discrepancies, pdf files prevail over docx file.

Skytop Brewster -TR-800, Rig -105



EXALO DRILLING - RIG TR 800 (RIG No -105)

RIG SPECIFICATIONS.

1 Rig Name	
1	Rig Designation SKYTOP BREWSTER TR-800
1	Year of manufacture 1992 (modification 2011)
1	Rig Type TRAILER RIG
1	Actual Rig Location AKTOBE KAZAKHSTAN
1	Average Fuel consumption under full drilling operation [m3/day] 5 -7 m3/day (winter time) 3 -5 m3/ day (summer time)
1	No. of Truck loads required for moving rig & rig camp 131
1	No. of Truck loads required for moving main camp 35
1	Expected inter/location move time rig & rig camp <30km [days] 7-10
1	Liquid mud storage capacity [m3] 178 m3
1	Fuel storage capacity [m3] 70 m3
0	
1	Drilling water storage capacity [m3] 60 m3
1	
2 Rated drilling capacity	
2	for 5 " Drill Pipe [m] 3000 m
3 Mast	
3	Make and Type SKYTOP BREWSTER 115-410XF
3	Date of Manufacture 1992 (Modification 2012)
3	Date of last full inspection a/p API Spec 8B Cat.IV (including sand-blast removal of all paint; NDT inspection, including MPI and ultra-sonic inspections, including inspection of all welds; inspections of all nuts, studs, pins; load-testing) 2012
3	Copies of the latest full MPI of complete mast to be included in tender documents. YES
3	Maximum Rated Static Hook Load [lbs] 410,000 lbs
3	w/ No. of lines 10 lines
3	Clear Height of Mast [ft] 115 ft (35m)
3	Base Width [ft] 14 ft (4,2m)
3	Rack back capacity 5 " DP [m] 992.1 ft (3023m)
3	Rack back capacity of 8" , 6-1/2" and 4 3/4" DC [No] 8 stands of 8"DC, 12 stands of 6 1/2" DC

0									
4 Substructure									
4	1	Make and Type							PD 190/160 Pak Serwis Kraków
4	2	Date of Manufacture							2005
4	3	Date of last full inspection a/p API Spec 8B Cat.IV (including sand-blast removal of all paint; NDT inspection, including MPI and ultra-sonic inspections, including inspection of all welds; inspections of all nuts, studs, pins; load-testing)							2012
4	4	Copies of the latest full MPI of complete mast to be included in tender documents.							YES
4	5	Floor Height [m]							16'-7" (5,05 m)
4	6	Clear Height under Rotary Beams [ft]							12'- 4" (3,8m)
4	7	Max. Number of Stands in Full Setback []							140 x 5"DP
4	8	Max. Rated Pipe Setback Load [klbs]							320 klbs
4	9	Max. Rated Casing Load [klbs]							420 klbs
4	1	Substructure to be equipped with trip pan							No
0									
5 BOP Hoisting/Skidding System									
5	1	Make and Type							Hand chain winch PFAFF - 2 x 10 tons
5	2	Date of last full inspection a/p API Spec 8B Cat.IV (including sand-blast removal of all paint; NDT inspection, including MPI and ultra-sonic inspections, including inspection of all welds; inspections of all nuts, studs, pins; load-testing)							2012
5	3	Capable of handling 13-5/8" x 5M ANN-DR-SR Assy.							YES
6 Crown Block									
6	1	Make and Type							Skytop Brewster
6	2	Date of last full inspection a/p API Spec 8B Cat.IV (including sand-blast removal of all paint; NDT inspection, including MPI and ultra-sonic inspections, including inspection of all welds; inspections of all nuts, studs, pins; load-testing)							04.2011
6	3	Copies of the latest full MPI of complete mast to be included in tender documents.							YES
6	4	Maximum Rated Hook Load [klbs]							410 klbs
6	5	Maximum Gross Load [klbs]							410 klbs
6	6	Number and OD of Sheaves [number x OD in inches]							1x42" x 5x30"
6	7	Grooved for line OD [in]							1-1/8"

6	8	c/w Sandline sheave line OD	n/a
6	9	c/w Catline sheave line OD	1 x 42"
7 Travelling Block/Hook Assy			
7	1	Make and Type	Skytop Brewster HB-245
7	2	Date of last full inspection a/p API Spec 8B Cat.IV (including sand-blast removal of all paint; NDT inspection, including MPI and ultra-sonic inspections, including inspection of all welds; inspections of all nuts, studs, pins; load-testing)	06. 2011
7	3	Copies of the latest full MPI of complete mast to be included in tender documents.	yes
7	4	Travelling Block API Working Load Strength Rating [klbs]	500 klbs
7	5	Number and OD of Sheaves [number x OD in inches]	5 x 36"
7	6	Grooved for line OD [in]	1-1/8"
7	7	Hook API Working Load Strength Rating [klbs]	500 klbs
7	8	Travelling Block/TDS/Hook Assy total length [in]	132-3/16"
7	9	Hook throat size checked & confirmed as compatible with lifting hoop of swivel and top-drive drilling system (allowing proper sitting of lifting hoop in hook and proper operation of hook safety-latch) [YES/NO]	YES
8 Drawworks			
8	1	Make and Type	Skytop Brewster DH1-4610
8	2	Drawworks Serial Number	DO763
8	3	Date of Manufacture	1992
8	4	Date of last full inspection a/p API Spec 8B Cat.IV (including sand-blast removal of all paint; NDT inspection, including MPI and ultra-sonic inspections, including inspection of all welds; inspections of all nuts, studs, pins; load-testing)	04.2011
8	5	Copies of the latest full MPI of complete mast to be included in tender documents.	yes
8	6	Nominal Input Power Rating [hp]	950 HP
8	7	Drawworks Motors [Make, Type, Number, hp]	2 x CAT 3408 diesel engine, 503 HP each
8	8	Drawworks Motors Ex-proofed	spark arrester
8	9	Number of Hoisting Speeds	5
8	10	Max. Hoisting Speed @ 350 klbs Hook Load [ft/s]	3,28 ft/s
8	11	Main Drum Diameter [in]	20"
8	12	Main Drum Width [in]	41"

2			
8	1	Main Drum Lebus-Grooved for Drilling Line OD [in]	1 1/8"
8	3		
8	1	Sand Line Drum Installed	yes without line
8	4		
8	1	Spinning Cathode	FOSTER - HYDR. CYLINDER
8	5		
8	1	Breakout Cathode	FOSTER - HYDR. CYLINDER
8	6		
8	1	Main Brake [Band/Disc]	band brake
8	7		
8	1	Auxiliary Brake [Make, Type]	PARMAC V-80
8	8		
8	1	Brake Cooling System	closed loop with antifreeze fluid
8	9		
8	2	Crown Saver [Type]	crown - o - matic
8	0		
9		Drilling Line	
9	1	Make and Type	Lankhorst Ropes 6x19 IWRC
9	2	Size [in x m]	1 1/8" x 1000 m
9	3	Type	right hand regular lay
9	4	Breaking Strength [klbs]	547 kN
9	5	New Reel Supplied @ Contract Startup	YES
9	6	Spare drilling line	YES
10		Top Drive	
10		N/O	
11		Swivel	
11	1	Make and Type	National Oilwell P300
11	2	Date of last full inspection a/p API Spec 8B Cat. IV (including sand-blast removal of all paint; NDT inspection, including MPI and ultra-sonic inspections, including inspection of all welds; inspections of all nuts, studs, pins; load-testing)	06.2011
11	3	API rated Dead Load Capacity [klbs]	661 klbs
11	4	API rated Bearing Capacity [klbs]	403 klbs
11	5	Gooseneck Conn. & Angle w/ vert. [°]	HU FIG 1502 TEM

11	6	Wash pipe seals suitable for SOBM usage	ok.
11	7	Rated Working Pressure [psi]	5000 psi
11	8	Stem thread, lower end	6 5/8" REG LH
12	Casing Stabbing Board		
12	1	Make and Type	DECARD „C" hinge type
12	2	Date of Manufacture or Last Overhaul	MODIFICATION 2011
12	3	fixed in Mast [YES/NO]	yes
12	4	Adjustable height for CSG Range III [ft.]	yes
13	Pipe-rack		
13	1	Racking Capacity for 5" Drill Pipe [m]	YES
13	2	Racking Capacity for 3-½" Drill Pipe [m]	YES
13	3	Racking Capacity for 13 3/8" Casing [m]	YES
13	4	Racking Capacity for 9-5/8" Casing [m]	YES
13	5	Racking Capacity for 7" Casing [m]	YES
13	8	Racking Capacity for 4 1/2" Casing [m]	YES
14	Air Compressors		
14	1	Make and Type	Atmos SE-44010
14	2	Date of Manufacture or Last Overhaul	2003/
14	3	Number	1
14	4	Soundproofing [YES/NO, describe]	INSTALLED inside container
14	5	Water separating device	yes
14	6	Total Capacity [SCFM air @ psig pressure]	@ 130 psig
14	7	Air Tank(s) Total Volume [SCF air @ psig pressure]	2,5m3 2,7 m3
14	8	Compressor Motors [Make, Type, Number]	electric engine 60hp (45kW)
15	Cold Start Compressor(s)		
15	1	Make and Type	K5M - electrical
15	2	Date of Manufacture or Last Overhaul	1972/1994
15	3	Number	1
15	4	Soundproofing [YES/NO, describe]	NO
15	5	Total Capacity [SCFM air @ bar pressure]	@ 10 bar
15	6	Air Tank(s) Total Volume [SCF air @ psig pressure]	2,5 m³ @
15	7	Compressor Motors [Make, Type, Number]	USSR/ A02-91-08/1

16 Tuggers		
16 1	Make and Type	BRADEN PD12C - SPL-59039-02-1
16 2	Date of Manufacture or Last Overhaul	2012
16 3	Number	1
16 4	Hoisting Capacity [lbs]	10 000 lbs
16 5	Air or Hydraulic Powered	HYDRAULIC
16 6	Tuggers POSITION	Rig Floor
17 Air Winches		
17 1	Make and Type	Ingersoll Rand FA51-24xK1-CE
17 2	Date of Manufacture or Last Overhaul	2010
17 3	Number	1
17 4	Hoisting Capacity [lbs]	11 000 lbs
17 5	Air or Hydraulic Powered	AIR
16 6	WINCH POSITION	Rig Floor
17 Dead Line Anchor		
17 1	Make and Type	HERCULES 118T
17 2	Date of Manufacture or Last Overhaul	1986
17 3	Capacity [klbs]	20 TON
17 4	w/ OD Drilling Line [in]	1 1/8"
17 4	All inspection and certification documents to be included in tender documents.	ok.
18 CUTTER for Drilling Line		
18 1	QUANTITY	2
18 2	MAKE	Hydroshear
18 3	TYPE	Hydraulic
18 4	CABLE SIZES max (IN)	1 1/8"
POWER PLANT SPECIFICATIONS FOR DIESEL-ELECTRIC / MECHANIC RIG		
1 Aux. AC Generators		
2 1	Make and Type	CAT - SR4
2 2	Date of Manufacture or Last Overhaul	MODIFICATION 2011
2 3	Operating hours since last factory-overhaul	1- 10569: 2-8886

2	4	Number	2
2	5	Max. Continuous Power [kVA @ RPM]	550 kVA @
2	6	Output Voltage [V]	400V
2	7	Output Frequency [Hz]	50 Hz
2	8	Prime Mover Make and Type	CAT 3412 DI
2	9	Prime Mover Date of Manuf. or Last Overhaul	MODIFICATION 2011
2	1	Prime Mover Max. Continuous Power [kW @ RPM]	379 kW @ 1500 RPM
2	0		
2	1	Prime Mover Sound Proofing (YES/NO, describe)	YES
2	1		
MUD SYSTEM			
1 Mud Pump Nr. 1			
1	1	Make and Type	GARDNER-DENVER PZ-8
1	2	Serial Number	505901
1	3	Date of Manufacture or Last Overhaul	Last Overhaul 2011
1	4	Rated Input Power [hp]	750 hp
1	5	Hydraulic Output Power @ Rated Input Power [HHP]	
1	6	Mud Pump Motor(s) [Make, Type, Number]	CATERPILLAR D398 DIESEL ENGINE
1	7	Mud Pump Motor(s) Rated Power [hp @ RPM]	750 HP @ 1100 RPM
1	8	Mud Pump Motor(s) Sound Proofing (YES/NO, describe)	NO
1	9	Pump Lubrication Drive [direct/independent]	DIRECT
1	1	Minimum/Maximum Continuous Pump RPM	50 RPM to 120 RPM
1	0		
1	1	Stroke Length [in]	8"
1	1	Maximum Liner Diameter [in]	7" Triplex
1	2		
1	1	Maximum Discharge Pressure [psi]	5000 psi
1	3		
1	1	Available Liner Sizes [list]	5", 5 1/2", 6 1/4"; 7"
1	4		
1	1	Liner 6 1/4 Size to deliver GPM @ psi	6 1/4" - 462 GPM@ 2500 PSI
1	5		
1	1	Liner 5 1/2 Size to deliver GPM @ psi	5 1/2" - 358 GPM@ 3230 PSI

6					5" - 296 GPM @ 3910 PSI
1	1	Liner 5 Size to deliver GPM @ psi			
7					
1	1	Supercharging Pump(s) [Make, Type, Power]			(1)Mission Magnum 6x5x14 (1)Harrisburg 1-7/8"
8					
1	1	Mud Pump and supercharging pump(s) suitable for SOBM			yes.
9					
1	2	Pulsation Dampener Make and Type			HYDRILL USA
0					
1	2	Relief Valve Make and Type			3" "O-DRILL" USA
1	1				
1	2	Relief Valve located upstream of discharge strainer			YES
2					
1	2	Total Pump Transport Weight [lbs]			(32 MT) 70546 lb with motor CAT
3					
1	2	Total Pump Transport Dimensions [WxLxH ft]			10 ft 26 ft 10 ft
4					
2		Mud Pump Nr. 2			
2	1	Make and Type			GARDNER-DENVER PZ-8
2	2	Serial Number			201-P-001
2	3	Date of Manufacture or Last Overhaul			Last Overhaul 2011
2	4	Rated Input Power [hp]			750 hp
2	5	Hydraulic Output Power @ Rated Input Power [HHP]			
2	6	Mud Pump Motor(s) [Make, Type, Number]			CATERPILLAR D398 DIESEL ENGINE
2	7	Mud Pump Motor(s) Rated Power [hp @ RPM]			750 HP @ 1100 RPM
2	8	Mud Pump Motor(s) Sound Proofing (YES/NO, describe)			NO
2	9	Pump Lubrication Drive [direct/independent]			DIRECT
2	1	Minimum/Maximum Continuous Pump RPM			50 RPM to 120 RPM
0					
2	1	Stroke Length [in]			8"
1					
2	1	Maximum Liner Diameter [in]			7" Triplex
2	2				
2	1	Maximum Discharge Pressure [psi]			5000 psi
3					

2	1	Available Liner Sizes [list]	5", 5 1/2", 6 1/4"; 7"
2	4		
2	1	Liner 6 1/4 Size to deliver GPM @ psi	6 1/4" - 462 GPM@ 2500 PSI
2	5		
2	1	Liner 5 1/2 Size to deliver GPM @ psi	5 1/2" - 358 GPM@ 3230 PSI
2	6		
2	1	Liner 5 Size to deliver GPM @ psi	5" - 296 GPM@ 3910 PSI
2	7		
2	1	Supercharging Pump(s) [Make, Type, Power]	(1)Mission Magnum 6x5x14 (1)Harrisburg 1-7/8"
2	8		
2	1	Mud Pump and supercharging pump(s) suitable for SOBM	yes
2	9		
2	2	Pulsation Dampener Make and Type	HYDRILL USA
2	0		
2	2	Relief Valve Make and Type	O- DRILL USA
2	1		
2	2	Relief Valve located upstream of discharge strainer	YES
2	2		
2	2	Total Pump Transport Weight [lbs]	(32 MT) 70546 lb with motor CAT
2	3		
2	2	Total Pump Transport Dimensions [WxLxH ft]	10 ft 26 ft 10 ft
2	4		
3		High Pressure Mud Lines	
3	1	Number	1
3	2	ID [in]	3"
3	3	Working Pressure [psi]	5000 psi
3	4	Last wall thickness testing [DATE]	06.2011
3	5	Connections	Fig 1502
3	6	Copies of latest wall thickness test for all high pressure mud lines to be included with the tender documents	yes
4		Stand Pipe(s)	
4	1	Number	1
4	2	ID [in]	3"
4	3	Working Pressure [psi]	5000 psi

4	4	Last wall thickness testing [DATE]		06.2011
4	5	Connections		Fig.1502
5 Rotary Hose(s)				
5	1	Number	2 (1 installed, 1 in reserve)	
5	2	ID [in]	3"	
5	3	Working Pressure [psi]	5000 psi	
5	4	Connections	Fig.1502	
5	5	Suitable for SOBM	ok.	
5	6	Safety clamps and/or slings	YES	
6 Mud Tank System				
6	1	Purpose	ACTIVE	
6	2	Transport Dimensions [WxLxH ft]	11 ft	40 ft
6	3	Total Capacity [m3]	81 m3	
6	4	Number of Compartments	4	
6	5	Agitators [YES/NO, Make and Type, Number]	yes x 7, Double Life Corp. MA10-251	
6	6	Mud Guns [YES/NO, Number]	YES- 4	
6	7	Last wall thickness testing [DATE]	2012	
6	8	Copies of latest wall thickness test for all tanks to be included with the tender documents	YES	
6	9	Sufficient centrifugal pumps and hard piping required between active and reserve system to allow mud transfer.	ok.	
6	1	All valves, seals and transfer pumps have to be suitable for SOBM	ok.	
6	0			
7 Reserve Mud Tanks				
7	1	Number of Reserve Mud Tanks [YES/NO]	yes (2 compartments)	
7	2	Transport Dimensions [WxLxH ft]	11 ft	40 ft
7	3	Total Reserve Volume Capacity [m3]	96 m3	
7	4	Agitators [YES/NO, Make and Type, Number]	yes x 3, Double life corp. MA10-251	
7	5	Copies of latest wall thickness test for all tanks to be included with the tender documents	2012	
8 Trip Tank				
8	1	Transport Dimensions [WxLxH ft]	9 ft	24 ft
8	2	Capacity [m3]	2 x 6,5 m3	
8	3	Feeder Pump [Make, Type and Size]	Mission, harrisburg	

8	4	Tank Level Indicator [describe]		yes
8	5	Tank Level Alarms [describe]		yes
9		Mud Mixing Hoppers		
9	1	Number		2
9	2	Size, Make, Type		6"
9	3	Equipped for Big Bags [YES/NO]		NO
9	4	Shearing device [YES/NO]		NO
10		Mud Mixing / Transfer Pumps		
10	1	Make, Type and Size		Mission Magnum 8 x 6 x 14 & 8 X 6 X 14
10	2	Number		2
10	3	Input Power [kW]		75 kW
12		Flow Line		
12	1	Nominal Diameter [in]		OPEN TYPE
12	2	Available Height Difference Between Bell Nipple and Shale Shaker Possum Belly [in]		0.8m
13		Headerbox or Flow Distribution System		
13	1	Make, Type and Size		PACK SERVICE - OPEN TYPE
13	2	Flow Handling Capacity		MIN.1000 GPM
13	3	Capability to divert flow (cement dump line)		YES
14		Shale Shakers		
14	1	Make and Type		(3 pcs MI SWACO Moonguse PT)
14	2	Date of Manufacture or Last Overhaul		2011
14	3	Max Flow l/min (mud 1,20sg, 140mesh)		2300
14	4	Operating Principle (Linear, elliptic, balanced elliptic etc.)		Flo-Line + (Linear)
14	5	Single- or Dual-Deck Type [SINGLE/DUAL]		SINGLE
14	6	Available Screen Sizes		Possible from 30 to 350 mesh
15		Desander(s)		
15	1	Make and Type		MI SWACO
15	2	Date of Manufacture or Last Overhaul		2012
15	3	Number		1
15	4	Number and Size of Cones [# / in]		3 / 10"
15	5	Capacity [GPM] of Unweighted Water Base Mud		573 GPM

15	6	Feeder Pump [Make, Type and Size, Power]	MISSION MAGNUM 6"X 5"X14"
16 Mud Cleaner (optional)			
16	1	Make and Type	MI Swaco Moonguse 12 SH 213
16	2	Date of Manufacture or Last Overhaul	2012
16	3	Number	1
16	4	Number and Size of Cones [# / in]	20 / 4"
16	5	Capacity [GPM] of Unweighted Water Base Mud	75 GPM
16	6	Feeder Pump [Make, Type and Size, Power]	MISSION MAGNUM 6"X 5"X14"
16	7	Available Screen Sizes	Possible from 30 to 350 mesh
17 Centrifuge			
17	1	Make and Type	Swaco
17	2	Number	1
17	3	Capacity [GPM] of Unweighted Water Base Mud	23 m3/h
17	4	Feeder Pump [Make, Type and Size, Power]	Seepex BN 35 -6L (max 20 m3/h)
17	5		
18 Poor-Boy Degasser			
18	1	Make and Type	PAK SERVICE POLAND
18	2	Date of Manufacture or Last Overhaul	modification 2011
19 Mud-Gas Separator			
19	1	Make and Type	Derrick Vacu-flo 1200
19	2	Date of Manufacture or Last Overhaul	manufactured in 2011
19	3	Feeder pump Make, Type, Dimension, Capacity	MISSION MAGNUM 6"X 5"14" , 1200 GPM
20 Water Tanks			
20	1	Number	1
20	2	Total Capacity [m ³]	60m3
21 Water Pumps			
21	1	Make, Type and Size, Power	MM 3 X 2 X 13, el. motor 15 kW/380 V
21	2	Number	2
21	3	Capacity [GPM]	400 GPM
22 Water Hoses			
22	1	Number	4

22	2	Make and Type	TUBES
22	3	Total Length [m]	50m
22	4	Connection Type	2" safli lok coupling
23 Cuttings Tank			
23	1	Number	3
23	2	Transport Dimensions [WxLxH m]	2,45m 5,6m 1,6m
23	3	Total Capacity [m ³]	20 + 20 + 20 m3
25 Pump for Cellar Empty			
25	1	Make, Type and Size, Power	Wilden M-8, Wilden PX15
25	2	Number, capacity [bbbl]	2.
26 Fuel Tanks			
26	1	Number	1
26	2	Total Capacity	total 42 m3
26	3	Test-kit for Diesel Quality	NO
BOP EQUIPMENT			
1 13-5/8" 5M Annular			
		13 5/8"X 350 atm	1
1 13-5/8" 5M Double RAM			
		N/O	
1 13-5/8" 5M Drilling Spool			
			Yes
1 Adapter's or spools			
			Yes
1	1		
2			
2	1	N/O	
3 Remote BOP Control from Ground Level			
3	1	N/O	
3	2		
1 CHOCK LINE			

	350 atm	1
1	Kill Line Valve(s)	
	350 atm	1
1	Portable BOP Test Stump / Test Pump	
1	Test Pump Make & Type	Test Unit CAD 15K-S-A
1	Working Pressure for test Stump [psi]	15000 psi
1	Test Stump min. for the 13-5/8 - 5M ANN-DR-DS-SR BOP stack	OK.
2	Chiksan Joints	
2	Number	5
2	Nominal Size [in]	2
2	Working Pressure [psi]	15000 psi
2	Length of each Joint [ft]	6
2	H2S Trim [YES/NO]	no
2	Connections	WECO Fig. 1502
RIG FLOOR EQUIPMENT		
1	Rotary Table and Drive	
1	Make and Type	Skytop Brewster RSH-22
1	Date of Manufacture or Last Overhaul	MODIFICATION 2011
1	Maximum Opening [in]	27"
1	API Dead Load Capacity [klbs]	520 klbs
1	API Rotating Load Capacity [klbs]	800 klbs
1	Max. Recommended Table Speed [RPM]	200 rpm
1	Drive Motor(s) [Make, Type and Size, Power]	transmission power from drawwork engine
2	Master Bushing	
2	Make and Type	ok.
2	Split Type or Solid Block	split tape
2	Size	for 27" rotary table
2	Insert Bowl Sizes Available for 13-3/8" Casing Slips	Available
2	Insert Bowl Sizes Available for 9-5/8" Casing Slips	Available
2	Insert Bowl Sizes Available for 7" Casing Slips	Available

2	7	Insert Bowl Sizes Available for 4.1/2" Casing Slips	Available
2	8	Insert Bowl Sizes Available for 5" Drill Pipe Slips	Available
2	9	Insert Bowl Sizes Available for 3-1/2" Drill Pipe Slips	Available
3		Kelly Bushing	
3	1	Make and Type	VARCO type
3	2	For Kelly Dimensions :	for 5 1/4" and 3 1/2"
4		Kelly(s)	
4	1	Number	1x 5 1/4" & 3 1/2"
4	2	Size [OD in x ID in]	x
4	3	Shape [HEX/SQU]	SQU (FOR 3-1/2" SQUARE)
4	4	Length [ft]	36 FT (11M)
4	5	Top Connection	6 5/8" REG LH
4	6	Bottom Connection	4 1/2" IF
4	7	Manufacturer	USA
5		Lower Kelly Valve	
5	1	Number	1
5	2	Make and Type	PACKARD
5	3	Dimensions [OD in x ID in]	6 5/8" x 2 13/16"
5	4	Top Connection	4-1/2" IF
5	5	Bottom Connection	4-1/2" IF
5	6	Working Pressure [psi]	10 000 psi
6		Upper Kelly Valve	
6	1	Number	1
6	2	Make and Type	PACKARD
6	3	Dimensions [OD in x ID in]	7 3/4" x 3 1/16"
6	4	Top Connection	6-5/8" REG LH
6	5	Bottom Connection	6-5/8" REG LH
6	6	Working Pressure [psi]	10 000 psi
7		Inside BOP for 5" DP (NC50)	
7	1	Number	2
7	2	Make and Type	PACKARD
7	3	Dimensions [OD in x ID in]	6 5/8" x 2 13/16"

7	4	Bottom Connection		NC 50
7	5	Working Pressure [psi]		5000 psi
8		Inside BOP for 3-1/2" DP (3-1/2" IF)		
8	1	Number		2
8	2	Make and Type		PACKARD
8	3	Dimensions [OD in x ID in]	4 3/4 in	x 2 1/4 in
8	4	Bottom Connection		NC38
8	5	Working Pressure [psi]		5000 psi
9		Circulating Head for 5" DP (NC50)		
9	1	Number		1
9	2	Dimensions [OD in x ID in]	6 5/8 in	x 2 13/16.
9	3	Top Connection		Fig 1502
9	4	Bottom Connection		NC 50
9	5			
10		Circulating Head for 3-1/2" DP (3-1/2" IF)		
10	1	Number		1
10	2	Dimensions [OD in x ID in]		6 5/8" X 2 13/16"
10	3	Top Connection		Fig 1502
10	4	Bottom Connection		3 1/2" IF
10	5			
11		Circulating Head for 13-3/8" Casing		
11	1	Number		1
11	2	Dimensions [OD in x ID in]		x
11	3	Top Connection		NC50
11	4	Bottom Connection		13 3/8" BUTTRESS PIN
11	5	Working Pressure [psi]		MIN 5000
12		Circulating Head for 9-5/8" Casing		
12	1	Number		1
12	2	Dimensions [OD in x ID in]		x
12	3	Top Connection		NC50
12	4	Bottom Connection		9 5/8" pin Buttress
12	5	Working Pressure [psi]		5000 psi

13		Circulating Head for 7" Casing	
13 1	Number	1	
13 2	Dimensions [OD in x ID in]	x	
13 3	Top Connection	NC 50	
13 4	Bottom Connection	BTC	
13 5	Working Pressure [psi]		
14		Kelly Spinner	
14 1	Make and Type	WEATHERFORD - KS1500AB	
14 2	Maximum Torque [ft-lbs]	825 ft-lbs	
14 3	AIR/HYDR Powered	AIR	
15		Elevator Links to run Drill Pipe	
15 1	Make and Type	VARCO WELDLESS	
15 2	Number	1	
15 3	Length [in]	2-1/4"x108"	
15 4	Capacity [klbs]	250 TON	
16		Elevator Links to Run and Cement Casing	
16 1	Make and Type	VARCO WELDLESS	
16 2	Number	1	
16 3	Length [in]	2-1/4"x132"	
16 4	Capacity [klbs]	250 klbs	
17		Rotary Manual Tongs 100,000 ft-lbs	
17 1	TONGS JAWS FOR DRILL PIPE AND DRILL COLLARS	BV 100	
17	MAKE	Blohm & Voss	
17	JAW SIZES (IN)	4" -17"	
17	TYPE	100 000	
17 2	TONG COUNTERBALANCE LINES, WEIGHTS ETC		
18		Rotary Manual Tongs 55000 ft-lbs	
18 1	TONGS JAWS FOR DRILL PIPE AND DRILL COLLARS	BV 65	
18	MAKE	Blohm & Voss	
18	JAW SIZES (IN)	3 1/2" - 13 3/8"	
18	TYPE	55 000	
18 2	TONG COUNTERBALANCE LINES, WEIGHTS ETC		

19 Rotary Manual Tongs 35000 ft-lbs	
19 1	TONGS JAWS FOR DRILL PIPE AND DRILL COLLARS WRT-36
19	MAKE
19	JAW SIZES (IN) 2 3/8"-10 3/4"
19	TYPE 35 000
19 2	TONG COUNTERBALANCE LINES, WEIGHTS ETC
20 Drillpipe Spinner	
20 1	QUANTITY Grayspin Mark 10
20 2	MAKE Blohm + Voss
20 3	TYPE Pneumatic
20 4	SIZE RANGE (IN) 3 1/2" - 7"
20 5	MAX TORQUE Average 1920 Nm
21 Slickline / Wireline Unit	
21 1	Make and Type MATHEY GSC B2
21 2	Drive Motor(s) [Number, Make and Type] 15 kW
21 3	Depth Capacity [m] 5000 m
21 4	Reel Capacity [m] 5400 m
21 5	New Reel at Contract Startup [YES/NO] Y
22 Elevators 5" DP	
22 1	Make and Type BJ CL
22 2	Number 1
22 3	Capacity [klbs] 250 TON
23 Elevators 3-1/2" DP	
23 1	Make and Type BJ CL
23 2	Number 1
23 3	Capacity [klbs] 150 TON
24 Elevators 8" Drill Collar	
24 1	Make and Type BV TA
24 2	Number 1
24 3	Capacity [klbs] 150 TON
25 Elevators 6-1/2" Drill Collar	

25	1	Make and Type	NOW TA
25	2	Number	1
25	3	Capacity [klbs]	150 TON
26	Elevators 4-3/4" Drill Collar		
26	1	Make and Type	NOW TA
26	2	Number	1
26	3	Capacity [klbs]	100 TON
27	CASING EQUIPMENT		
27		Elevators	
27		Make and Type	CSG 6 5/8" BV SLX
27		SIZE	6 5/8"
27		Number	2
27		Capacity [t]	150T
27		Make and Type	CSG 7" BJ Type MDD, 7" BV
27		SIZE	7"
27		Number	1 pcs
27		Capacity [t]	250T;150T
27		Make and Type	CSG 9 5/8" B+V
27		SIZE	9 5/8"
27		Number	2pcs
27		Capacity [t]	250 T, 160T
27		Make and Type	CSG 12 3/4" BV SLX
27		SIZE	12 3/4"
27		Number	2 pcs
27		Capacity [t]	150T
27		Make and Type	CSG 13 3/8" UMC
27		SIZE	13 3/8"
27		Number	2pcs
27		Capacity [t]	120T, 160T

27		Snigle Elevator	
27	Make and Type	Single CSG 6 5/8" BVM	
27	SIZE	6 5/8"	
27	Number	1	
27	Capacity [t]	5T	
27	Make and Type	SINGEL CSG 7"	
27	SIZE	7"	
27	Number	1	
27	Capacity [t]	5T	
27	Make and Type	Single CSG 9 5/8"	
27	SIZE	9 5/8"	
27	Number	1	
27	Capacity [t]	5T	
27	Make and Type	Single CSG 12 3/4"	
27	SIZE	12 3/4"	
27	Number	1	
27	Capacity [t]	5T	
27	Make and Type	Single CSG 13 3/8"	
27	SIZE	13 3/8"	
27	Number	1	
27	Capacity [t]	5T	
27	CASING THREAD PROTECTORS, KLAMPON OR SIMILAR		
27	CASING SPIDERS/SLIPS		
27	QUANTITY	1	
27	MAKE	Elevator BJ	
27	TYPE	Lower Spider	
27	SLIP INSERTS OF RUNNING (IN)		
27	CAPACITY (MT)	7"; 7 5/8"; 9 5/8"; 13 3/8" 350T	
28	POWER TONG for CASING		

28	QUANTITY	1
28	MAKE	Weatherford
28	JAWS SIZES (IN)	6 5/8"; 9 5/8"
28	TYPE	16.25
28	MAKE-UP Torque - max	33 895 Nm
28	MAKE-UP GAUGE AND SENSOR	26000 Nm
28	RIG SUPPLIED POWER SOURCE	Hydraulic Unit
29	POWER TONG for TBG	
	N/O	
1	Drillpipe Slips 5"	
1 1	Make and Type	VARCO SDL
1 2	Number	1
2	Drillpipe Slips 3-1/2"	
2 1	Make and Type	VARCO SDS
2 2	Number	1
3	Drill Collar Slips 8"	
3 1	Make and Type	OK.
3 2	Number	1
4	Drill Collar Slips 6-1/2"	
4 1	Make and Type	DCS - R or equiv.
4 2	Number	1
5	Drill Collar Slips 4-3/4"	
5 1	Make and Type	DCS-R or equiv.
5 2	Number	1
6	Drill Collar Safety Clamps	
6 1	Drill Collar Safety Clamps for all DC Dimensions	yes
6 2	Number	1
7	Drill Collar Lift Subs	
7 1	Sufficient Drill Collar Lift Subs for all DC Dimensions	Lifting cups
8	Chain Tongs and Small Handling Tools	

8	1	Adequate Chain Tongs and Sufficient Handling Tools	YES
9 Tricone Bit Breakers			
9	1	SIZE for BIT	Yes
10 Bit Calliper Rings			
10	1	SIZE for BIT	Yes
11 Casing Drift			
11	1	13-3/8" - 61#	YES
11	2	9-5/8" - 36# & 43.5# & 47#	YES
11	3	7" 23# & 26# & 29#	YES
11	4	4.5" 13.5# & 15.1#	YES
DRILL STRING			
1 5" 19.5# Drill Pipe			
		N/O	
1 5" 19.5# Grade S135 Drill Pipe Pup Joints			
		N/O	
1 3-1/2" 13.3# Drill Pipe			
1	1	Number of Joints	180 Jts - E 75
1	2	Joint Length [ft]	appr.30.5
1	3	Connections	3-1/2" IF (NC38)
1	4	Hardbanding [YES/NO]	ARNCO 100XT + Armacor „M star“ ,
1	5	Internal Coating [YES/NO]	YES
1	6	Current Condition [Class I, Premium, Class II]	Premium
1	7	All drill pipe have to be Grade "S" , range 2, premium as per API RP 7 and inspected to DS1 standard category 4 and recoated prior to contract startup.	AS REQUIRED
2 3-1/2" 15.5# Grade S135 Drill Pipe Pup Joints			
2	1	Number of 5' Joints NC38	1

2	2	Number of 10' Joints NC 38	1
2	3	Number of 15' Joints NC 38	0
3		5" Heavy Weight Drill Pipe	
		N/O	
1		3-1/2" 19.5# Heavy Weight Drill Pipe	
		N/O	
1		8" Drill Collars	
		N/O	
1		4-3/4" Drill Collars	
		N/O	
1		Subs and X-Overs	
1	1	Necessary Subs and X-Overs for all Contractor's Drill String Elements incl. Fishing and evtl. Rental Equipment	YES
2		5" Top Drive Saver Subs	
2	1	Supply of Saver Subs to cross over from Contractor's Top Drive to quoted 5" Drill Pipe	YES
3		3-1/2" Top Drive Saver Subs	
3	1	Supply of Saver Subs to cross over from Contractor's Top Drive to quoted 3-1/2" Drill Pipe	YES
4		Bit Subs with retrievable FV	
4	1	Number of 6-5/8" REG Box x 6-5/8" REG Box	YES
4	2	Number of 4-1/2" REG Box x 4-1/2" IF Box	YES
4	3	Number of 3-1/2" REG Box x 3-1/2" IF Box	YES
5		Drill Pipe Protectors for 5" Drill Pipe	
5	1	Make and Type	metal / plastic
5	2	Number	for all connection
6		Drill Pipe Protectors for 3-1/2" Drill Pipe	
6	1	Make and Type	metal / plastic
	2	Number available	for all connection
6	3	PIPE WIPERS	10 for each size of drill pipe

		2 3/8" - 5 1/2"
DRILLING TOOLS		
Equipment Quoted		
1	15-1/2" String Stabilizer(s) (optional)	
1	Number	1
1	Make and Type	spiral blades
1	Body OD [in]	11 13/16 in
1	Bore [in]	2 13/16"
1	Top Connection	6.5/8" REG
1	Bottom Connection	6.5/8" REG
2	11-5/8" Bit Stabilizer(s)	
2	Number	1
2	Make and Type	spiral blades
2	Body OD [in]	8"
2	Bore [in]	2 13/16"
2	Top Connection	6 5/8" reg
2	Bottom Connection	6 5/8" reg
3	11-5/8" String Stabilizer(s)	
3	Number	2
3	Make and Type	spiral blades
3	Body OD [in]	8"
3	Bore [in]	2 13/16"
3	Top Connection	6 5/8" reg
3	Bottom Connection	6 5/8" reg
4	8-1/2" Bit Stabilizer(s)	
4	Number	1
4	Make and Type	spiral blades
4	Body OD [in]	6 1/2"
4	Bore [in]	2"
4	Top Connection	4" IF
4	Bottom Connection	4 1/2" reg

5 8-1/2" String Stabilizer(s)	
5 1	Number 2
5 2	Make and Type spiral blades
5 3	Body OD [in] 6 1/2"
5 4	Bore [in] 2"
5 5	Top Connection 4" IF
5 6	Bottom Connection 4"IF
6 Casing Scraper for 7" - 23# & 26# & 29#	
6 1	Number 1
6 2	Make and Type LOGAN OIL TOOLS / 6 BLADE.
6 3	Top Connection NC 38
6 4	Bottom Connection NC 38
FISHING TOOLS TO BE SUPPLIED BY CONTRACTOR	
Comment: Tool includes all necessary spares to catch all of Contractor's tubulars	
RIG INSTRUMENTATION	
1 Mechanical Drilling Parameter Recorder	
1 1	Make and Type Multi-pen recorder/type M/D channels, 6-pens 6-
1 2	WOB Recorded [YES/NO] YES
1 3	ROP Recorded [YES/NO] YES
1 4	Rotary/TopDrive Torque Recorded [YES/NO] Rotary torque Top Drive indicator only
1 5	Rotary/TopDrive Speed Recorded [YES/NO] Top Drive indicator only
1 6	Pump Strokes 1,2,3 Recorded [YES/NO] YES
1 7	Standpipe Pressure Recorded [YES/NO] YES
2 Driller's Console	
2 1	Make and Type SKYTOP Brewster
3 Analog Weight Indicator	
3 1	Make and Type M/D TOTCO
4 Analog Mud Pump Pressure Gauges	

4	1	Make and Type	M/D Pressure meter
4	2	Number	2
4	3	Confirm all gauges machined-flange type (no threads)	Yes
4	4	Max. Working Pressure [psi]	6000 psi
5 Analog Rotary Torque Indicator			
5	1	Make and Type	M/D Torque-Meter
5	2	Indicator Range	ft-lbs
6 Rotary Speed Indicator			
6	1	Make and Type	M/D RPM-Meter
6	2	Indicator Range	0 RPM 400
7 Analog Top Drive Torque Indicator			
7	1	Make and Type	DRILLMEC HTD 200
7	2	Indicator Range	0 dNm 32000
8 Top Drive Speed Indicator			
8	1	Make and Type	DRILLMEC HTD 200
8	2	Indicator Range	0 RPM 400
9 Mud Pump Stroke Indicator			
9	1	Make and Type	M/D SPM-Meter,
9	2	Number	2
9	3	Indicator Range	0-200
10 Mud Pump Stroke Totalizer			
10	1	Make and Type	Drillab
10	2	Number	1
10	3	Indicator Range	0-200
11 Mud Pit Volume Indicator			
11	1	Make and Type	Drillab
11	2	Number	1
11	3	Pit Volume Totalizer [YES/NO]	yes
11	4	High/Low Alarm [YES/NO]	yes
12 Tong Torque Gauge			
12	1	Make and Type	M/D Torque-Meter

12	2	Number	2
12	3	Indicator Range	10000kgm
13 Drift Indicator (Totco Tool)			
13	1	Make and Type	MD TOTCO
13	2	Number	2
13	3	Ranges	0-8°; 0-16°
14 Drilling Fluid Testing Equipment (Mud Laboratory)			
14	1	Mud Balance [YES/NO]	yes
14	2	Marsh Funnel [YES/NO]	yes
15 Wind Speed Indicator			
15	1	Make and Type	Anemometer A-2004S / Transmitter V-821
15	2	Number	1
AUXILIARY RIG EQUIPMENT			
1 Welding Machine(s)			
6	1	Make and Type/Power	Tiger 190 180A; Lincoln Invertec 270SX 200A
6	2	Number	1
2 Sanitary Water Tank @Rig Site			
8	1	Make and Type	PAK SERVIS POLAND
8	2	Number	1
8	3	Transport Dimensions [LxWxH ft]	
8	4	Capacity [bb]	22 m3
9 Sanitary Water Treatment Plant @Rig Site			
9	1	Make and Type	Available
9	2	Number	Available
9	3	Treating Capacity [GPM]	Available
9	4	Feeder Pump(s) to Camp Facilities [Number, Make and Type, Power]	Available
11 Working and Storage Rooms			
11	1	Dog House	YES
16	2	Drillers Cabin (fully winterized and clima controlled)	winterized
11	3	Meeting Room / Crew tea room	YES

11	4	Electrician/Welding shop e/w all rig site standard tools		YES
11	5	Mechanic Shop e/w all rig site standard tools		YES
SAFETY EQUIPMENT				
5 Fire Pump				
5	1	Make /Type/Engine	Honda GX 240/trash pump WT30X	
5	2	Capacity l/min	1200 l/min	
5	4	Hose: size/ length	2"	
5	4	Locations	WATER TANK	
7 Derrickman Escape Device				
7	1	certified Geronimo Line/Escape device		Yes
7	2	Number of Individual Safety Belts	min. 3 (e.g. Lubawa S-5)	
8 Eye Wash Stations				
8	1	Number		Yes
8	2	Locations [list]	mud mix area and rig floor, R/M Office	
9 Emergency Shower				
9	1	Number		Yes
9	2	Locations [list]	mud mix area	
1 Rig Site Fly Camp				
1	1	Make & Type (side by side/containers)		40'
1	2	Capacity [beds]		min.10
1	3	Independent sewage treatment		only Cesspit
1	4	Fully Climate controlled		yes
1	5	Independent Power Source		yes
1	6	Fully winterized		yes
1	9	Toilets (rig / camp)		yes
1	1	Mini Kitchen (describe)		yes
	0			
1	1	Showers / Laundry Cabin		yes
To accommodate:				
1	1	Company Man		yes

2				
1	1	Night Company Man)		yes
	3			
1	1	Co Geologist (yes
	4			
2		Main Camp		
2	1	Make & Type (side by side/containers)		40'
2	1	Solid waste can		yes
	1			
		WINTERIZATION		
1		Boiler		
		Make & Type		Steam boiler Bethlehem E980
1	1	Performance- steam		Max 1965 kWt /100 psi
2		AIR HEATER		
2	1	Make & Type		TIOGA - IDF 6CO. Operation 700-1722 Kpa

Photographic documentation:



Photo no. 1 Annular 13 5/8" 5K 350atm

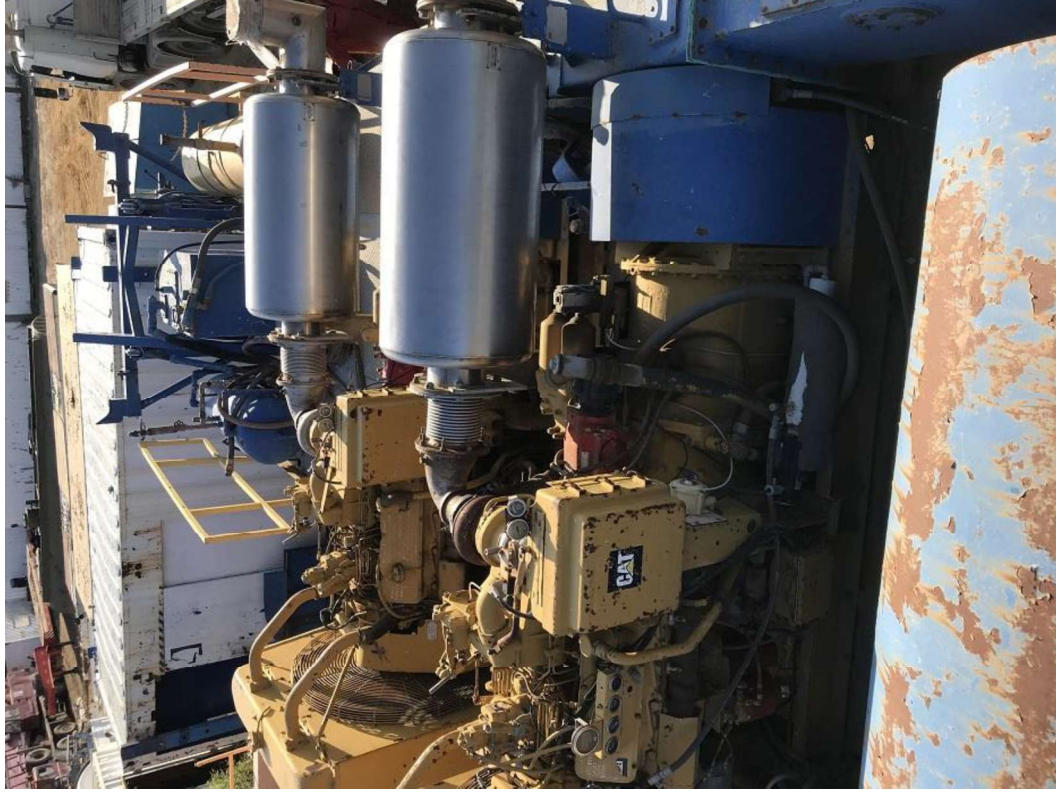


Photo no. 2 Carrier Skytop Brewster DH1-4610 with 2 x CAT 3408 diesel engine



Photo no. 3 Mission Magnum Pump 8 x 6 x 14



Photo no. 4 Centerfuge Swaco



Photo no. 6 Kelly 1 x 5 1/4"



Photo no. 5 Elewator



Photo no. 7 DP 3 1/2" E



Photo no. 8 Caterpillar D398 Diesel Engine 2 pcs



Photo no. 9 Mud cleaner Mi Swaco Moonguse 12 SH 213

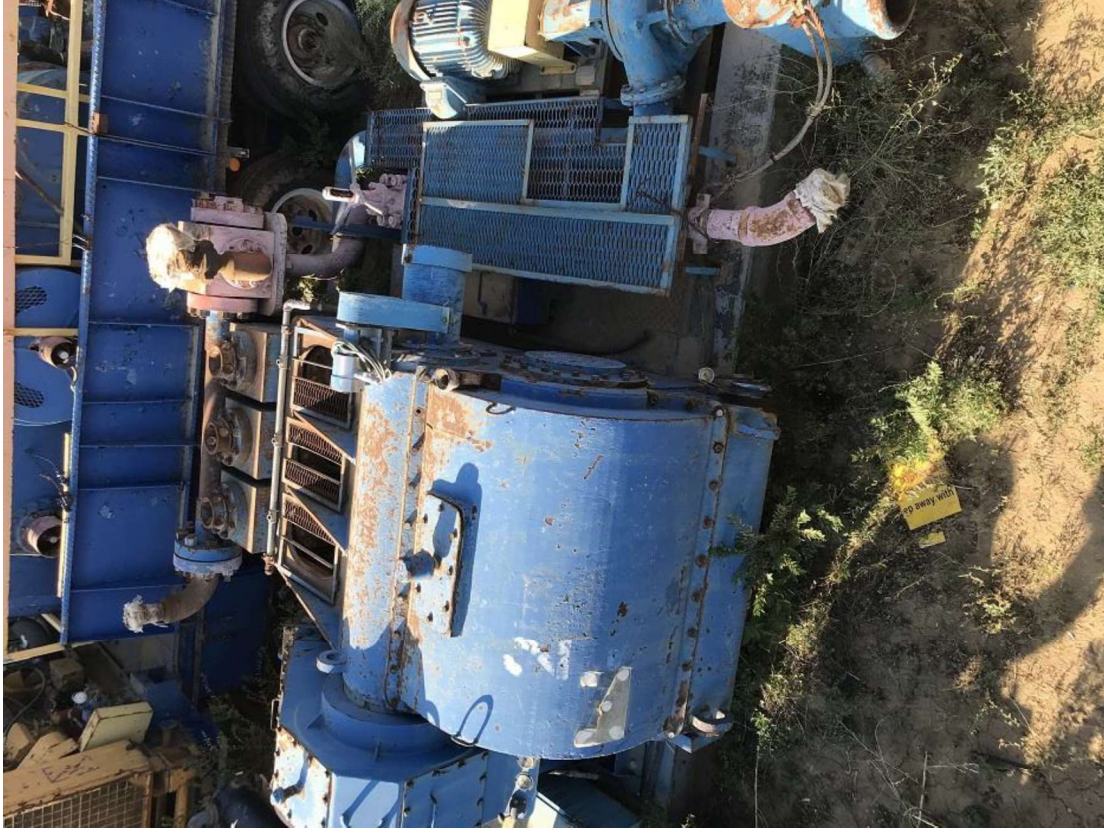


Photo no. 10 Mud Pump GARDNER-DENVER

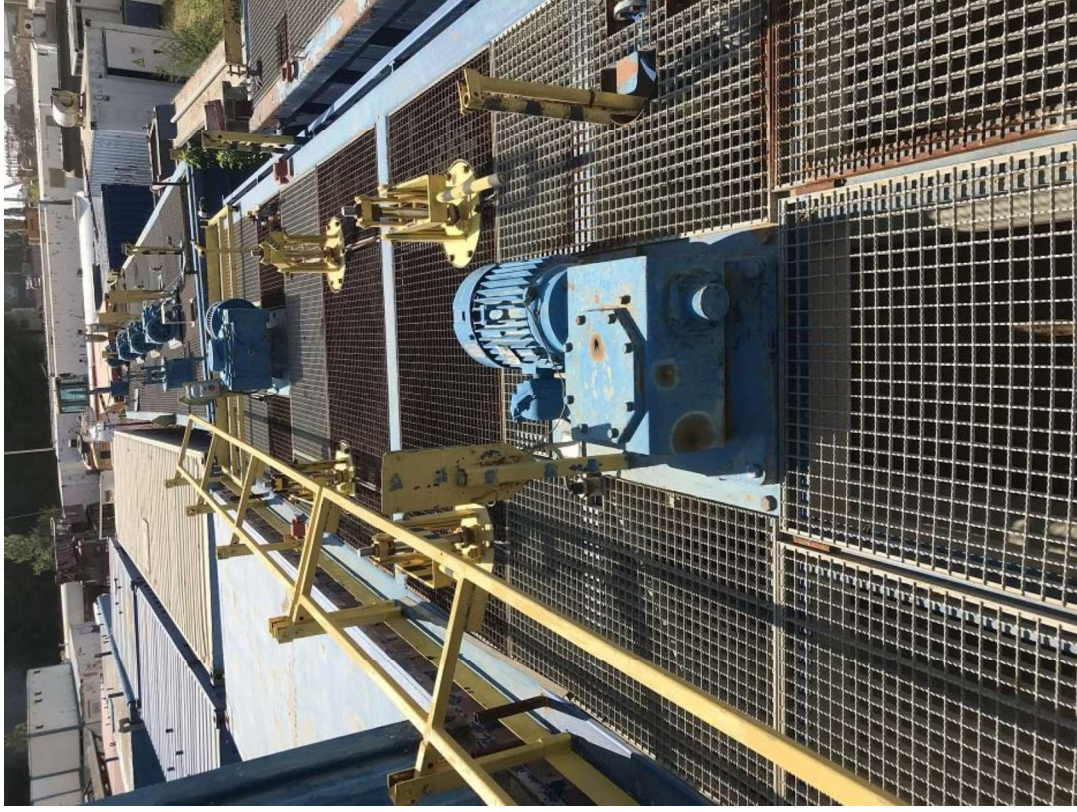


Photo no. 11 Mud tank

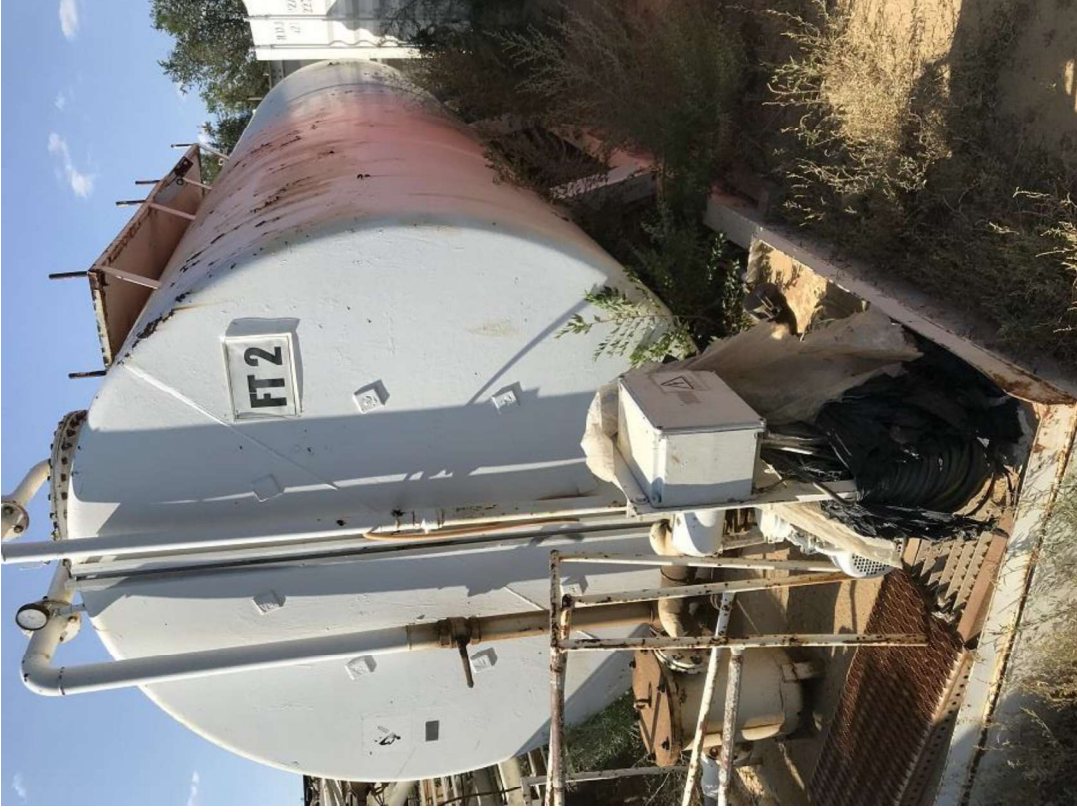


Photo no. 12 Fuel Tanks



Photo no. 13 Store



Photo no. 14 Swivel National Oilwell P300



Photo no. 15 Mast Skytop Brewster 115-410XF



Photo no. 16 Rotary table Skytop Brewster RSH-22

Appendix No. 2 – Price Form

Price form

ITEM DESCRIPTION according to Technical Specification	QUANTITY	UNIT	TOTAL NET PRICE *please chose currency
Skytop Brewster TR 800	1	PC	<div style="background-color: yellow; border: 1px solid black; width: 100px; height: 15px; margin: 0 auto;"></div> <p style="text-align: center;">USD</p>

We declare to accept of Draft Sales Agreement:

YES / NO**

**please choose only one answer

Place of hand-over of the Equipment

MB Trans Yard, Zhanazhol
Filed, Aktobe Province
N48° 21' 31" ; E 57°28'43";
Kazakhstan

Reception time (days):

mandatory

Validity of offer:

90 days

Payment scheme:

100% of the Total Price within 30 days after delivery of the Invoice to the Buyer

- Current Company Register Document.
- If offer is signed by Authorized person other than the one indicated in the registration documents, please provide Power of Attorney here.

Bidder offer No.

Date and Signature of Bidders

Authorized Person

Bidders Company Stamp

SALE AGREEMENT OF THE DRILLING RIG

concluded on _____ by and between:

«Exalo Drilling S.A.», a company incorporated under laws of Poland having its registered head office at Plac Staszica 9, 64-920 Piła, Poland, entered into ten National Court Registered maintained by the District Court for Poznań – Nowe Miasto i Wilda in Poznań IX Commercial Division of the National Court Register under KRS numer 0000428139, possessing Tax Identification Number (NIP) 5272681258, share capital of PLN 981 500 000 fully paid up, being a big entrepreneur under the understanding of the relevant polish legal act through the Branch of Exalo Drilling JSC in the Republic of Kazakhstan, represented by the Director of the Branch Mr. _____, acting on the basis of the Power of Attorney dated _____,

hereinafter referred to as „the Seller”

and

[details of the buying party – address, tax numbers, registration details, etc. – similar to the description as details of the seller, as applicable due to the nature of buying party]

Hereinafter referred to as „the Buyer”

represented by:

_____ - _____
_____ - _____

[details of the natural persons signing the agreement on behalf of the buyer with specification of the function: e.g. CEO and if need be accompanied by e.g. power of attorney]

Hereinafter referred individually as „the Party” and collectively as „the Parties”

WHEREAS:

- a) The Seller is an owner of used drilling rig Skytop Brewster TR 800,
- b) The Seller has carried out an unlimited tender no 13-DPZBP-2022 dated _____ for the sale of said drilling rig,
- c) The Buyer submitted the bid to buy the drilling rig,

NOW THEREFORE the Parties hereby agree as follows:

1. SUBJECT OF THE AGREEMENT

- 1.1. The Seller sells and the Buyer buys used drilling rig Skytop Brewster TR 800, manufacturing date _____, as per technical specification contained in the appendix no 1 to this agreement and which consists of the items contained in the appendices no 2 and 3 to this agreement, that was subject to technical audit performed in April 2021, of which the Technical audit report is an appendix no 4 to this agreement, hereinafter referred to as „**the Rig**”, under the terms and conditions specified in hereby agreement and under terms and conditions

specified in the unlimited tender invitation no. 13-DPZBP-2022 dated _____, being appendix no 5 to the agreement.

- 1.2. As per appendix no 5, the Buyer had an opportunity to inspect the Rig before submission of the bid in the tender, referred to in preceding section. Regardless of the fact, if the Buyer has used said opportunity, the Buyer hereby declares that is well aware of the technical condition, quality, contents and any other feature of the Rig being purchased, including the fact that the Rig was used and is not new and agrees to buy the Rig as it is without the right to claim any defects, malfunctions or other issues of the Rig. The Seller does not confirm nor warrant or guarantee the Rig to be operational. The Rig may require repairs, replenishments, maintenance and/or other operations in order for it to be ready for safe and proper use.
- 1.3. The Buyer does not grant any guarantee of quality with regard of the Rig. The Parties hereby exclude the statutory warranty for the legal and physical defects of the Rig.

2. PRICE AND PAYMENT TERMS

- 2.1. Sales price is _____ USD (say: _____ United States Dollars _____ Cents) net + ___ % VAT (if applicable), that is _____ USD (say: _____ United States Dollars _____ Cents) total (gross), hereinafter referred to as „**the Rig price**”.
- 2.2. The Buyer paid, a tender deposit in the amount of 45.000,00 USD (say: forty five thousand United States Dollars zero cents). Deposit is being retained by the Seller for the account of the Rig price upon signing the Agreement.

The Buyer undertakes to pay the Seller Rig price, reduced by the amount of deposit referred to in preceding section, within 30 (thirty) days from the day of delivery of the commercial invoice covering Rig price issued by the Seller.

- 2.3. All payments under the present Agreement shall be done by the bank account transfer to the Seller's bank account following details:

Name of the bank: _____
Account No: _____
BIC/SWIFT Code: _____
Currency: _____

In case the legislation of the Republic of Kazakhstan provides for specific tax settlement rules, especially in the scope of VAT, such rules shall apply. An invoice shall be issued in electronic form within 7 days from the date of signing of the Sale Agreement.

- 2.4. Any formal obligations, duties and other deeds referring to customs, duties, export, import of the Rig are the sole responsibility of the Buyer.
- 2.5. The Buyer shall pay any taxes, including sales, value added, withholding or any other taxes applicable to hereby agreement or that may become applicable to hereby agreement. Rig price is based on the understanding that the revenue derived by the Seller under this agreement is not subject to withholding tax. Should any withholding taxes be imposed, the commercial

invoice, invoice amount shall be increased such that the net amount received by the Seller shall be equal to the amount that would have been received before such withholding taxes had been imposed.

- 2.6. Should any claim be asserted towards the Seller by the state of Kazakhstan or any state or local custom or tax assessing authority against the Seller in connection with any of the Buyer's unpaid duties, taxes on profits or gains, the Buyer shall indemnify and hold the Seller harmless from any costs or expenses whatsoever arising out of such claims.
- 2.7. The Seller shall not be responsible to obtain any export licenses or other official authorisation necessary for the sale or export of the Rig.

3. DELIVERY

- 3.1. The Rig shall be delivered under the terms Ex Works Incoterms 2020 location: MB Trans Yard, Zhanazhol Filed, Aktobe Province (N48° 21' 31" ; E 57°28'43"), Kazakhstan.
- 3.2. The Buyer undertakes to collect the Rig within ___ days of the payment of the Rig price to the Seller. Collection of the Rig before the Seller's bank account is credited with the Rig price is not possible. The Buyer undertakes to notify the Seller at least ___ days prior to the commencement of collection of the Rig via e-mail or in writing. Should Buyer miss the deadline referred to in the preceding sentence and the Seller be not ready for the hand over of the Rig at the moment of arrival of the Buyer's representatives to collect the Rig, the Seller has the right to postpone hand over in accordance to the deadline given in the preceding sentence. Such circumstance is not considered as a delay of the Seller or any other default of the Seller.
- 3.3. Collection of the Rig shall be performed by the Buyer on his own expense and effort, including but not limited to dismantling, packing, loading, transport, insurance, collection and other.
- 3.4. Prior to the commencement of the collection activities of the Rig by the Buyer in the location given in section 3.1, the Parties shall sign the Certificate of Acceptance and Transfer of the Rig confirming the handover of the Rig to the Buyer.

4. OWNERSHIP TITLE AND RISK

- 4.1. The transfer of the ownership title over the Rig shall take place at the moment of the Rig price being credited on the Seller's bank account.
- 4.2. The risk of loss and damage of the Rig shall pass from the Seller to the Buyer with the moment of conclusion of hereby agreement.

5. TERMINATION

- 5.1. The Seller has the right to withdraw from the agreement unilaterally and without judicial procedures by sending an appropriate notice in writing, in any of the following cases, if:

5.1.1. The Buyer did not pay the Rig price in the deadline stipulated in article 2 section 2.3 increased by an extra time indicated by the Seller for the payment, within 60 days from the expiration of said extra time.

5.1.2. The Buyer goes into liquidation, becomes bankrupt, be dissolved or have a an appropriate winding-up decision made against it by the competent authority / court, make or attempt to make composition proceedings or arrangements with creditors within 60 days from the day of becoming aware of said condition for withdrawal.

If the Seller withdraws from the agreement on any of the grounds set out in this Clause, the deposit paid by the Buyer as set out in Clause 2.2. of the Agreement shall not be refunded.

5.2. The Buyer has the right to withdraw from the agreement in the event of the Seller does not hand over the Rig in the deadline stipulated in article 3 section 3.2 increased by an extra time indicated by the Seller for the hand over of the Rig, within 60 days from the expiration of said extra time.

In this case the deposit shall be refunded to the Buyer within 14 (fourteen) days from the date of withdrawal from the Agreement.

6. FORCE MAJEURE

6.1. "Force Majeure" shall be deemed to mean circumstances, conditions or events outside the control of either Party and impossible to foreseen at the moment of conclusion of the agreement that render impossible or impossible for the time being either Party's fulfilment of its duties and obligations under this agreement and shall include, but not limited to, war (whether declared or not), hostilities, acts of God (including fire, flood, lightning, storm, hurricane, tornado, earthquake, landslide, epidemic or other natural disaster), official strike declared by a trade union, governmental order or regulation or law or change or amendment thereof, boycott of import and/or export or trade sanctions or other barriers imposed by any country or group of countries.

6.2. In such cases referred to in section 6.1 above, provided that the other Party is notified in writing, indicating the type of Force Majeure and a detailed description of the moment and impact of its occurrence on preventing a Party from performing its contractual obligations within the agreed deadlines and indicating when their performance will be possible under the agreement, each Party shall not be liable for any losses, damages or delays in performing its obligations under the agreement for the period of the Force Majeure. Subject to the following sentences, the contractual deadlines shall resume automatically and immediately after the termination of the Force Majeure. The Party affected by the Force Majeure shall immediately, no later than within 2 (two) business days, inform the other Party in writing about the time needed to initiate again the performance of the agreement after the Force Majeure termination, with a proper justification. In such a case, the Parties may agree on a new date of performance of particular contractual obligations in the form of an annex to the agreement.

6.3. In case an event of Force Majeure should last for a period of 30 (thirty) or more calendar days, the Parties will meet to mutually agree in bona fide on the possible actions to take in light of the particular circumstances, including the termination of this agreement, in such case.

6.4. In the event of a delay in the performance of the agreement due to Force Majeure exceeding the period of more than 90 (ninety) calendar days, if the Parties have not reached a different agreement by way of the arrangement referred to in section 6.3, each Party has the right to terminate the Agreement unconditionally and without liability on the basis of a written notification delivered to the other Party. In the event of such termination, the Seller shall return all payments received from the Buyer within 14 (fourteen) days of termination and the Buyer shall return to the Seller the Rig, if any was delivered. The Rig shall be returned by the Buyer at Buyer's own expense, risk and efforts.

7. NOTIFICATION AND CORRESPONDENCE

7.1. Unless otherwise expressly stipulated in the agreement, all communications under this agreement or in connection herewith shall be in writing and shall be addressed to the Parties by and to the persons as follows, otherwise being null and void:

7.1.1. For the Seller:

7.1.1.1. Attention: Mr./Mrs. _____ ,
Address: _____ ,
Telephone number: _____
E-mail: _____

7.1.1.2. Attention: Mr./Mrs. _____ ,
Address: _____ ,
Telephone number: _____
E-mail: _____

7.1.2. For the Buyer:

7.1.2.1. Attention: Mr./Mrs. _____ ,
Address: _____ ,
Telephone number: _____
E-mail: _____

7.1.2.2. Attention: Mr./Mrs. _____ ,
Address: _____ ,
Telephone number: _____
E-mail: _____

7.2. Persons specified in section 7.1 are not entitled to amend, withdraw or perform any other deeds with regard to the existence of the agreement, without separate empowerment based on e.g. power of attorney, unless they are empowered to do so under the generally applicable law.

7.3. Each Party shall be obliged to notify the other Party in writing about the change of its contact persons and details within 2 (two) business days from the moment of such changes. Such change does not require amending the agreement and is valid and binding upon the Parties from the day following the day of receiving proper notification by the Party being notified.

8. CONFIDENTIALITY

- 8.1. Parties undertake to keep confidential and not to disclose to third parties without the prior explicit and written consent of the other Party, any information obtained in connection with the execution of the agreement, including the contents of this agreement and its annexes, as well as information obtained in the course of negotiations and correspondence preceding conclusion of the agreement, hereinafter referred to as „Confidential information“.
- 8.2. The Parties undertake not to use the Confidential information for purposes other than to those they were provided for, made available or disclosed and for the purposes not related to the performance of the agreement.
- 8.3. The Parties undertake to provide, at the other Party’s request, information about persons who have had access to the Confidential information.
- 8.4. Parties undertake to protect Confidential information made available to them at their own expense by providing the highest level of diligence.
- 8.5. Disclosure of Confidential information to the personnel of the Party shall be controlled and limited to members of staff providing services on the basis and in the performance of the agreement. Confidential Information may be disclosed to Party’s advisors and shareholders.
- 8.6. If, in accordance with applicable law, Confidential information must be made available by the Party to authorized entities, the Party may provide Confidential information only within the scope required by law, notifying the other Party within 3 (three) working days from the day of disclosure, specifying scope and content of the information disclosed and the legal basis of the disclosure, as well as the factual circumstances of the disclosure.
- 8.7. The obligation not to disclose Confidential information shall be valid for the duration of the agreement and for the period of 10 (ten) years after it expires.
- 8.8. If the Party violates the obligations referred to in sections 8.1-8.7 of the agreement, the other Party has the right to charge the infringing Party with a contractual penalty of USD 50.000,00, for each identified breach of the above-mentioned obligation. The Party has the right to claim additional damages from the infringing Party in the event damage actually suffered exceeds stipulated contractual penalty.

9. APPLICABLE LAW AND DISPUTE RESOLUTION

- 9.1. This agreement and all obligations arising out of it shall be governed by Polish law and shall be interpreted according to it. In matters not covered by the agreement, the provisions of the Polish generally applicable law apply, in particular the provisions of the Civil Code. The United Nations Convention on Contracts on the International Sale of Goods (CISG) of Vienna shall not apply.
- 9.2. All disputes regarding the interpretation, validity and performance of the agreement as well as other matters related to the agreement shall be settled by the Parties amicably.

- 9.3. If the Parties fail to reach an agreement within 60 days from the day of delivery to the other Party of the first letter containing claims disputes arising from the Agreement will be resolved by Polish courts competent for the registered office of the Seller.

10. SEVERABILITY CLAUSE

- 10.1. The Parties declare that in the event that any provision of this agreement, by virtue of law or final ruling of any administrative or judicial body, are found to be invalid or ineffective, the remaining provisions of this agreement shall remain in full force and effect, unless the circumstances clearly show that without the invalid or ineffective provisions, the agreement would not have been concluded.
- 10.2. The provisions of this agreement invalid or ineffective in accordance with the preceding point shall be replaced, by virtue of this agreement, by Parties with provisions valid in law and fully effective, the content of which shall be as close as possible to the original intentions of the Parties.
- 10.3. The failure of either Party, to enforce at any time or for any reason any of the provisions of this agreement shall not be construed as a waiver of such provisions or of the right of the party thereafter to enforce each and every provision hereof.

11. SANCTIONS CLAUSE

- 11.1. The Buyer declares that, to the best of its knowledge, as at the date of the agreement, it and its subsidiaries, parent companies and members of its bodies and persons acting on its behalf:
- 11.1.1. are in compliance with the sanctions regulations introduced by the Republic of Poland, the United Nations and the European Union, (the „Sanctions Regulations”);
 - 11.1.2. are not subject to any sanctions, including economic sanctions, trade embargoes or other restrictive measures imposed under the Sanctions Regulations and are not legal or natural persons with whom the Sanctions Regulations prohibit transactions (hereinafter: the „Sanctioned Entity”);
 - 11.1.3. are not directly or indirectly owned or controlled by legal or natural persons meeting the criteria described in sec. 11.1.2 above;
 - 11.1.4. do not reside or have their registered office or principal place of business in a state being subject of Sanctions Regulations or are not incorporated under the laws of a state being subject to Sanctions Regulations;
 - 11.1.5. are not involved in any proceedings or investigations against them in relation to a breach of any Sanctions Regulations.
- 11.2. The Buyer undertakes that:

- 11.2.1. it and its subsidiaries and the members of its bodies and persons acting on its behalf and for its benefit conduct themselves in accordance with the Sanction Regulations;
- 11.2.2. the items purchased under the agreement will not be directly or indirectly available to the Sanctioned Entity or used for the benefit of the Sanctioned Entity or used by the Buyer to the extent that such action is not permitted under the Sanctions Regulations;
- 11.2.3. in the event that any statement made in sec. 11.1 becomes untrue, it shall, unless prohibited by law, promptly, but in any event within 30 days of becoming aware of such event, inform the Seller of each such event and of the steps taken to restore the truth of such statements;
- 11.2.4. shall indemnify the Seller for any damage caused by any acts or omissions of the Buyer, its subsidiaries, parent companies and members of its bodies and persons acting on its behalf and for its benefit in connection with the non-performance or improper performance of the obligations referred to in this sec. 11.2.

12. MISCELLANEOUS

- 12.1. The Seller shall not, in any event or under any circumstances, be responsible for damages or other sums in excess of the total Rig price actually paid by the Buyer. The Buyer shall not be responsible or liable in any regard with respect to damages, including lost of profits, claimed with relations to the purchase of the Rig or resulting from the use of the Rig by the Buyer or any other entity.
- 12.2. The Parties hereby confirm, that they are in full capacity, financial, technical, organisational and other to conclude and perform hereby agreement, as well as its conclusion and performance is allowed under both Parties internal regulations or under generally applicable regulations to either Party. Parties confirm, any corporate approvals necessary for the conclusion and performance of hereby agreement have been acquired and are valid.
- 12.3. Parties undertake to inform each other in writing or via e-mail, to the addresses given in hereby agreement about any circumstances that may prevent either of them from proper performance of the agreement or that may affect agreement performance or the other Party in any negative way.
- 12.4. Neither Party hereto may assign, transfer, sell or part with the benefit of the whole or any part of this agreement.
- 12.5. In the event of any discrepancies or contradictions between the contents of the agreement and its appendices, the contents of the agreement shall prevail.
- 12.6. No amendment to this agreement shall enter into force unless made in the form of an annex, concluded in writing, duly executed by an authorized representative of each Party.

12.7. Agreement has been made in two identical copies written in English, one for each of the Parties. This agreement supersedes all previous agreements regarding sale of the Rig.

Appendices:

1. Technical specification;
2. List of items sold as the drilling rig - Rig inventory - fixed assets;
3. List of items sold as the drilling rig – Rig inventory – materials;
4. Technical audit report dated 30.04.2021;
5. Unlimited tender invitation no 13-DPZBP-2022 dated _____ ;

The Seller

The Buyer

Appendix no.2 to agreement - List of items sold as the drilling rig - Rig inventory - fixed assets

LP	Fixed Assets Description
1	BOILER HOUSE BETHLEHEM-CONTINENTAL E980
2	BOILER HOUSE RUMIA HTO35
3	DIESEL ENGINE CAT 3412 , 665HP
4	DIESEL ENGINE CAT 3408, 503HP, 2100RPM
5	DIESEL ENGINE CAT D-398 910 HP, 1200RPM.
6	DIESEL ENGINE CAT 3408, 503HP, 2100RPM
7	DIESEL ENGINE CAT D398, 910 HP, 1200RPM
8	FULL REBUILD DIESEL ENGINE CAT D398
9	DIESEL ENGINE CAT C18, 774,8HP, 1500 RPM,
10	DIESEL ENGINE CAT C18, 578 KM, 1500
11	DIESEL ENGINE CAT D 398TA
12	AC ELECTRIC MOTOR, VIMARC NETHERLAND
13	AC ELECTRIC MOTOR, VIMARC NETHERLAND
14	AC ELECTRIC MOTOR, VIMARC NETHERLAND
15	VIBRATOR MOTOR TYPE CDX 18-5900, 380/415 1,75 HP, 1
16	AC ELECTRIC MOTOR, MARATHON 50KM
17	AC ELECTRIC MOTOR, TOSHIBA: S241572X4015
18	AC ELECTRIC MOTOR, TOSHIBA: S241572X4015
19	AC ELECTRIC MOTOR, TOS
20	AC ELECTRIC MOTOR, MARATHON 20KM
21	AC ELECTRIC MOTOR, MARATHON 40KM
22	ELECTRIC MOTOR, KEM 45KW/400V, 1472RPM
23	ELECTRIC MOTOR, MARATHON 1465RPM, 8HP 380V
24	ELECTRIC MOTOR, MARATHON 1465RPM, 8HP 380V
25	ELECTRIC MOTOR, MARATHON 1465RPM, 8HP 380V
26	ELECTRIC MOTOR, MARATHON 1465RPM, 8HP 380V
27	ELECTRIC MOTOR, MARATHON 1465RPM, 8HP 380V
28	ELECTRIC MOTOR, MARATHON 1465RPM, 8HP 380V
29	ELECTRIC MOTOR, MARATHON 1465RPM, 8HP 380V
30	ELECTRIC MOTOR, MARATHON 1465RPM, 8HP 380V
31	ELECTRIC MOTOR, MARATHON 1745/1450RPM, 8HP 230
32	AC ELECTRIC MOTOR, SRF100/1/M13
33	AC ELECTRIC MOTOR, ITALVIBRAS 1,
34	AC ELECTRIC MOTOR, ITALVIBRAS 1,
35	ELECTRIC MOTOR, CELMA, CSGB 160L4-EP, 400V, 15
36	ELECTRIC MOTOR, CELMA, CSGB 160L4-EP, 400V, 15
37	AC ELECTRIC MOTOR, 460 V
38	ELECTRIC MOTOR, INDUKTA SKG 160M-4 11KW
39	ELECTRIC MOTOR, INDUKTA SKG 160M-4 11KW
40	ELECTRIC MOTOR, HEW 15KW
41	ELECTRIC MOTOR, CELMA ECSGB280S4-EP 75KW
42	VIBRATOR MOTOR TYPE CDX 18-5900 1.75HP
43	VIBRATOR MOTOR TYPE CDX 18-5900 1.75HP
44	VIBRATOR MOTOR TYPE CDX 18-2150 0,5HP
45	GENERATOR, KIPOR KDE12EA3
46	ELECTRIC MOTOR, MARATHON, TYP, 190/380V, 75HP,
47	ELECTRIC MOTOR, CELMA INDUKTA EX 17KW 60HZ
48	GENERATOR SR-4, 440 KW
49	GENERATOR CATERPILLAR CAT SR-4, 520KW, 650KVA 400V
50	GENERATOR CATERPILLAR CAT 650, 520 KW, 1500 RPM
51	CRIMPING MACHINE FINN POWER P20
52	HYDRAULIC CUTTER HYDRASHEAR P-1125 FOR STEEL ROPE

53	SLURRY PUMP HONDA WT-30X, 1200 L/MIN
54	CHARGING PUMP MISSION MAGNUM 6X5X14
55	CHARGING PUMP MISSION MAGNUM 6X5X14
56	CHARGING PUMP MISSION MAGNUM 6X5X1
57	CHARGING PUMP MISSION MAGNUM 6X5X1 CAPITAL REPAIR
58	CHARGING PUMP MISSION MAGNUM 6X5X14
59	CHARGING PUMP MISSION MAGNUM 8X6X11
60	CENTRIFUGE PUMP, SEEPEX 35-6L BN A1-C1-A5-F0A, MAX
61	CHARGING PUMP MISSION SUPREME 2500 8X6X14
62	CHARGING PUMP MCM 118 1.5X1 WITH ELECTRIC MOTOR
63	CHARGING PUMP MISSION MAGNUM 3X2X13
64	CHARGING PUMP MISSION MAGNUM 3X2X13
65	CHARGING PUMP MISSION MAGNUM 3X2X13
66	CHARGING PUMP FARUM 3X2X13
67	CHARGING PUMP FARUM MUD HOG 6X5X14
68	CHARGING PUMP FARUM MUD HOG 6X5X14
69	CHARGING PUMP FARUM 1X1.1/2
70	HYDRAULIC PUMP, INTER FLUID POWER INC TYP: P25
71	HYDRAULIC PUMP, INTER FLUID POWER INC TYP: P2
72	AIR COMPRESSOR CCCP KC3-5M, 5 M3/MIN, 8 AT
73	AIR COMPRESSOR ATMOS SE 440, 7,43 M3/MIN 8 AT
74	AIR COMPRESSOR BOGE S-90
75	AIR COMPRESSOR BOGE S-90
76	WILDEN PUMP M8
77	HIGH-PRESSURE WASHER KARCHER HDS 895-4M ECO
78	HIGH-PRESSURE WASHER EHRLE HD 1140 ETRONIC
79	ELECTRIC HEATER RUFFNECK FX4-380-350
80	STEAM HEATER RUFFNECK FR-1-12-EP 380
81	STEAM HEATER RUFFNECK FR-1-12-EP 380
82	ELECTRIC HEATER RUFFNECK, FX4-380350-125
83	STEAM HEATER RUFFNECK, FR1-16
84	PORTABLE OIL HEATER DAYTON TYP 3E -359B
85	PORTABLE OIL HEATER DAYTON TYP 3E -359B
86	ELECTRIC HEATER RUFFNECK, FE1-480360-100-T
87	ELECTRIC HEATER RUFFNECK, FE1-480360-100-T
88	ELECTRIC WELDING MACHINE BESTER SPF-401
89	WELDING MACHINE WORKER
90	3-1/2 OD DRILL PIPE, NC-38 CONN'S
91	3-1/2 OD DRILL PIPE, NC-38 CONN'S
92	3-1/2 OD DRILL PIPE, NC-38 CONN'S
93	3-1/2 OD DRILL PIPE, NC-38 CONN'S
94	3-1/2 OD DRILL PIPE, NC-38 CONN'S
95	3-1/2 OD DRILL PIPE, NC-38 CONN'S
96	3-1/2 OD DRILL PIPE, NC-38 CONN'S
97	MAST SKYTOP BREWSTER 115-XF410, RIG SKYTOP
98	HYDRAULIC CYLINDER SYSTEM FOR TR-800
99	CARRIER SKYTOP BREWSTER TR800
100	SUBSTRUCTURE TR-800 WITH BOP TROLLEY
101	MUD BOAT SKYTOP TR-800
102	MUD PUMP FRAME
103	SHALE SHAKERS FRAME
104	CROWN BLOCK SKYTOP BREWSTER
105	CROWN BLOCK SKYTOP BREWSTER CAPITAL REPAIR
106	TRAVELLING BLOCK WITH HOOK SKYTOP BREWSTER HB-245
107	TRAVELLING BLOCK WITH HOOK SKYTOP BREWSTER HB-245 CAPITAL REPAIR
108	DRAWWORKS SKYTOP BREWSTER DH-14610

109	SWIVEL NATIONAL P300
110	SWIVEL NATIONAL P300 CAPITAL REPAIR
111	MUD PUMP GARDNER-DENVER PZ-8, 750HP, 5000PS
112	MUD PUMP GARDNER-DENVER PZ-8, 750HP, 5000PS CAPITAL REPAIR
113	MUD PUMP GARDNER-DENVER PZ-8, 750HP, 5000PS
114	KOR.OW04
115	ROTARY TABLE SKYTOP BREWSTER RSH-22
116	POOR BOY
117	SPROCKET GEAR OF THE ROTARY TABLE DRIVE SK
118	STABBING BOARD
119	SPROCKET GEAR OF THE ROTARY TABLE DRIVE SK
120	SPROCKET GEAR OF THE HYDROMAT DRIVE SK
121	SPROCKET GEAR OF THE MUD PUMP DRIVE SK
122	8" DRILL COLLAR ELEVATOR B+V
123	ELEVATOR BAILS BVM 2 3/4" 216" 350 T
124	MANUAL TONG B+V WRT-35 2 3/8"-11"
125	MANUAL TONG B+V WRT-35 2 3/8"-11"
126	6-1/2" DRILL COLLAR ELEVATOR B+V CLS-150/3
127	3-1/2 OD DRILL PIPE, NC-38 CONN'S
128	3-1/2 OD DRILL PIPE, NC-38 CONN'S
129	ADAPTER SPOOL 13 5/8 5000 PSI X 11 5000 PSI
130	3-1/2 OD DRILL PIPE, NC-38 CONN'S
131	3-1/2 OD DRILL PIPE, NC-38 CONN'S
132	3-1/2 OD DRILL PIPE, NC-38 CONN'S
133	3-1/2 OD DRILL PIPE, NC-38 CONN'S
134	LIFTING CUP PIN NC50
135	3-1/2 OD DRILL PIPE, NC-38 CONN'S
136	LIFTING CUP PIN NC50
137	13 3/8" CASING SLIPS
138	CIRCULATING SWAGE PIN 7"BTC X BOX NC40
139	TONG LINE PULL SYSTEM
140	PNEUMATIC POWER TONG B+V GRAYSPIN
141	MUD GUN 3"
142	MUD GUN 3"
143	MUD GUN 3"
144	MUD GUN 3"
145	MUD GUN 3"
146	MUD GUN 3"
147	CHANNEL CABLE PROTECTOR 8M
148	CHANNEL OF WATER STEAM PIPELINES 8M
149	CHANNEL OF WATER STEAM PIPELINES 8M
150	MANUAL TONG BV-65 3.1/2" – 21.1/2"
151	MANUAL TONG BV-65 3.1/2" – 21.1/2"
152	HYDROKINETIC TRANSMISSION OIL WORKS C-300-64
153	HYDROKINETIC TRANSMISSION NATIONAL C-300-64 FH
154	SHALE SHAKER
155	SHALE SHAKER MI-SWACO MONGOOSE
156	MUDCLEANER MI SWACO MONGOOSE PT 9672300-08IT
157	DESANDER 3-10
158	DESILTER 20-4
159	MUD HOPPER
160	MUD AGITATOR DOUBLE LIFE MA10-251
161	MUD AGITATOR DOUBLE LIFE MA10-251
162	MUD AGITATOR DOUBLE LIFE MA10-251
163	MUD AGITATOR DOUBLE LIFE MA10-251
164	MUD AGITATOR DOUBLE LIFE MA10-251

165	MUD AGITATOR DOUBLE LIFE MA10-251
166	MUD AGITATOR DOUBLE LIFE MA10-251
167	MUD AGITATOR DOUBLE LIFE MA10-251
168	MUD MIXING HOPPER 6"
169	MUD AGITATOR WIERTMET MP-11/55
170	MUD AGITATOR WIERTMET MP-11/55
171	WEIGHT INDICATOR MARTIN DECKER
172	HYDRAULIC CASING TONG, WEATHERFORD 16-25
173	KELLY SPINNER WEATHERFORD KS1500AB
174	HYDRAULIC TUBING TONG, WESTCO
175	STATIONARY FILTRATION UNIT CJC HDU 15/25 PV-E
176	DRILLER CABIN WITH SUBSTRUCTURE
177	TARPAULIN OF MUD HOPPERS
178	TARPOULIN OF MUD PUMP HALL
179	HYDRAULIC WINCH GEARMATIC 25-11.10.11.00
180	HYDRAULIC CYLINDER EZY-TORQUE
181	STABBING BOARD
182	CENTRIFUGE BRANDT 3900/SWACO 518
183	ADAPTER SPOOL 11" 3000 PSI X 13 5/8" 5000 PSI
184	CUP TESTER 6 5/8" - 7" M X C NC38
185	ELEVATOR BAILS
186	ELEVATOR BAILS
187	LOWER KELLY COCK PACKARD
188	ADAPTER SPOOL 13 5/8" 5000 PSI X 7 1/6" 5000 PSI
189	ADAPTER
190	ROTARY TABLE BUSHING
191	27 1/2" MASTER BUSHING WITH 11 3/4" INSERTS
192	WELDING FLANGE 21 1/4" 5K X 21 1/4" 5000 PSI
193	ROTARY TABLE NATIONAL C-275
194	MUD AGITATOR MP-11/55
195	MUD AGITATOR MP-11/55
196	MUD AGITATOR MP-11/55
197	ANNULAR BOP VH 13 5/8 X 5000 PSI
198	HYDROKINETIC TRANSMISSION TYPE C-300-64FH
199	AIR DRYER KS- 115-12
200	AIR DRYER HANKINSON HHL-800
201	23" MASTER BUSHING
202	ADAPTER
203	HYDRAULIC BRAKE D 631545 X D20V 80
204	15 1/2" STABILIZER
205	ELEVATOR BAILS
206	ELEVATOR BAILS
207	DRILL COLLAR SLIPS 10 pcs
208	DRILL COLLAR SLIPS 11 pcs
209	DRILL COLLAR SLIPS 11 pcs
210	DRILL COLLAR SLIPS 12 pcs
211	DRILL COLLAR SLIPS 8 pcs
212	5" DRILL PIPE SLIPS
213	3-1/2" DRILL PIPE SLIPS
214	2-7/8" SLIPS
215	4-3/4" DRILL COLLAR ELEVATOR
216	12-3/4" SINGLE CASING ELEVATOR
217	6-5/8" CASING ELEVATOR
218	6-5/8" CASING ELEVATOR
219	12-3/4" CASING ELEVATOR
220	13-3/8" CASING ELEVATOR

221	7" CASING ELEVATOR
222	12-3/4" CASING ELEVATOR
223	6-5/8" CASING ELEVATOR
224	4-3/4" DRILL COLLAR ELEVATOR
225	4 - 4-1/2" CASING ELEVATOR
226	WILDEN PUMP
227	WILDEN PUMP
228	HIGH-PRESSURE WASHER KARCHER HDS 895M
229	MUD GUN 3"
230	MUD GUN 3"
231	9-5/8" CASING ELEVATOR
232	9-5/8" CASING ELEVATOR, GLINIK
233	13-3/8" CASING ELEVATOR, GLINIK
234	3-1/2" DRILL PIPE ELEVATOR, B+V 150T
235	7" SINGLE CASING ELEVATOR, DEN-CON
236	13-3/8" SINGLE CASING ELEVATOR
237	7 CASING ELEVATOR, AOT, 150TON
238	8" DRILL COLLAR ELEVATOR, BJ, 150 TON
239	SPIDER ELEVATOR, BJ-350 TON
240	SPIDER ELEVATOR, BJ-350 TON
241	6-1/2" DRILL COLLAR ELEVATOR, B+V 150 TON
242	2-7/8" TUBING ELEVATOR, BVM, 90 DEGREE 150TON
243	8" DRILL COLLAR ELEVATOR B+V 150TON
244	3-1/2" DRILL PIPE ELEVATOR, B+V CL-150/1
245	2-3/8" TUBING ELEVATOR, 90 DEGREE, BLOHM+VO
246	MANUAL TONG B+V BV-100 4"-17"
247	MANUAL TONG B+V BV-100 4"-17"
248	ELEVATOR BAILS VARCO
249	6 1/2" DRILL COLLAR ELEVATOR B+V 150 T
250	6 5/8" SINGLE CASING ELEVATOR VARCO
251	BOP SKID WITH 13 5/8" FLANGE
252	9 5/8" SINGLE CASING ELEVATOR VARCO
253	3-1/2 OD DRILL PIPE, NC-38 CONN'S
254	3-1/2 OD DRILL PIPE, NC-38 CONN'S
255	OVERSHOT 8 1/8 ,BOWEN, TYPE SO 160
256	3-1/2 OD DRILL PIPE, NC-38 CONN'S
257	3-1/2 OD DRILL PIPE, NC-38 CONN'S
258	3-1/2 OD DRILL PIPE, NC-38 CONN'S
259	3-1/2 OD DRILL PIPE, NC-38 CONN'S
260	3-1/2 OD DRILL PIPE, NC-38 CONN'S
261	OVERSHOT 11 ,TYPE JBFA 005, 6 5/8 REG
262	3-1/2 OD DRILL PIPE, NC-38 CONN'S
263	DRIFT INDICATOR SYSTEM M/D TOTCO 1 5/8" 8°/16°
264	USED MEASUREMENT AND RECORDING SYSTEM WITH A SET OF PARTS
265	3-1/2 OD DRILL PIPE, NC-38 CONN'S
266	3-1/2 OD DRILL PIPE, NC-38 CONN'S
267	5 1/4" KELLY, M 6 5/8 WPL X C CONN'S
268	5" PUP JOINT S135, NC50 CONN'S
269	5" PUP JOINT S135, NC50 CONN'S
270	3-1/2 OD DRILL PIPE, NC-38 CONN'S
271	3-1/2 OD DRILL PIPE, NC-38 CONN'S
272	3-1/2 OD DRILL PIPE, NC-38 CONN'S
273	3-1/2 OD DRILL PIPE, NC-38 CONN'S
274	3-1/2 OD DRILL PIPE, NC-38 CONN'S
275	3-1/2 OD DRILL PIPE, NC-38 CONN'S
276	3-1/2 OD DRILL PIPE, NC-38 CONN'S

333	3-1/2 OD DRILL PIPE, NC-38 CONN'S
334	3-1/2 OD DRILL PIPE, NC-38 CONN'S
335	3-1/2 OD DRILL PIPE, NC-38 CONN'S
336	3-1/2 OD DRILL PIPE, NC-38 CONN'S
337	3-1/2 OD DRILL PIPE, NC-38 CONN'S
338	3-1/2 OD DRILL PIPE, NC-38 CONN'S
339	3-1/2 OD DRILL PIPE, NC-38 CONN'S
340	3-1/2 OD DRILL PIPE, NC-38 CONN'S
341	3-1/2 OD DRILL PIPE, NC-38 CONN'S
342	3-1/2 OD DRILL PIPE, NC-38 CONN'S
343	3-1/2 OD DRILL PIPE, NC-38 CONN'S
344	3-1/2 OD DRILL PIPE, NC-38 CONN'S
345	3-1/2 OD DRILL PIPE, NC-38 CONN'S
346	3-1/2 OD DRILL PIPE, NC-38 CONN'S
347	3-1/2 OD DRILL PIPE, NC-38 CONN'S
348	3-1/2 OD DRILL PIPE, NC-38 CONN'S
349	3-1/2 OD DRILL PIPE, NC-38 CONN'S
350	3-1/2 OD DRILL PIPE, NC-38 CONN'S
351	3-1/2 OD DRILL PIPE, NC-38 CONN'S
352	3-1/2 OD DRILL PIPE, NC-38 CONN'S
353	3-1/2 OD DRILL PIPE, NC-38 CONN'S
354	3-1/2 OD DRILL PIPE, NC-38 CONN'S
355	3-1/2 OD DRILL PIPE, NC-38 CONN'S
356	3-1/2 OD DRILL PIPE, NC-38 CONN'S
357	3-1/2 OD DRILL PIPE, NC-38 CONN'S
358	3-1/2 OD DRILL PIPE, NC-38 CONN'S
359	3-1/2 OD DRILL PIPE, NC-38 CONN'S
360	3-1/2 OD DRILL PIPE, NC-38 CONN'S
361	3-1/2 OD DRILL PIPE, NC-38 CONN'S
362	3-1/2 OD DRILL PIPE, NC-38 CONN'S
363	3-1/2 OD DRILL PIPE, NC-38 CONN'S
364	3-1/2 OD DRILL PIPE, NC-38 CONN'S
365	3-1/2 OD DRILL PIPE, NC-38 CONN'S
366	3-1/2 OD DRILL PIPE, NC-38 CONN'S
367	3-1/2 OD DRILL PIPE, NC-38 CONN'S
368	3-1/2 OD DRILL PIPE, NC-38 CONN'S
369	3-1/2 OD DRILL PIPE, NC-38 CONN'S
370	3-1/2 OD DRILL PIPE, NC-38 CONN'S
371	3-1/2 OD DRILL PIPE, NC-38 CONN'S
372	3-1/2 OD DRILL PIPE, NC-38 CONN'S
373	3-1/2 OD DRILL PIPE, NC-38 CONN'S
374	3-1/2 OD DRILL PIPE, NC-38 CONN'S
375	3-1/2 OD DRILL PIPE, NC-38 CONN'S
376	3-1/2 OD DRILL PIPE, NC-38 CONN'S
377	3-1/2 OD DRILL PIPE, NC-38 CONN'S
378	3-1/2 OD DRILL PIPE, NC-38 CONN'S
379	3-1/2 OD DRILL PIPE, NC-38 CONN'S
380	3-1/2 OD DRILL PIPE, NC-38 CONN'S
381	3-1/2 OD DRILL PIPE, NC-38 CONN'S
382	3-1/2 OD DRILL PIPE, NC-38 CONN'S
383	3-1/2 OD DRILL PIPE, NC-38 CONN'S
384	3-1/2 OD DRILL PIPE, NC-38 CONN'S
385	3-1/2 OD DRILL PIPE, NC-38 CONN'S
386	3-1/2 OD DRILL PIPE, NC-38 CONN'S
387	X-OVER BOX X BOX 5/8WP
388	X-OVER BOX 3 1/2 WP X BOX NC-38

389	X-OVER BOX 3 1/2 WP X BOX NC-38
390	X-OVER BOX 4 1/2 WP X BOX NC-46
391	X-OVER BOX 4 1/2 WP X BOX NC-46
392	4 1/4" KELLY BOX 6 5/8 REG LH X PIN NC50
393	4 1/4" KELLY BOX 6 5/8 REG LH X PIN NC50
394	UPPER KELLY COCK BOX 6 5/8 REG LH X PIN
395	UPPER KELLY COCK BOX 6 5/8 REG LH X PIN
396	CALIBRATION CIRCLE 5 1 / 2-10 3/8
397	CALIBRATION CIRCLE 5 1 / 2-10 3/8
398	5 1/2"-7" DRILL COLLAR SLIPS, VOLLEY
399	5 1/2"-7" DRILL COLLAR SLIPS, VOLLEY
400	5 1/2"-7" DRILL COLLAR SLIPS, VOLLEY
401	5 1/2"-10" DRILL COLLAR SLIPS, BVM, CXL
402	5 1/2"-10" DRILL COLLAR SLIPS, BVM, CXL
403	LIFTING PLUG NC38
404	LIFTING PLUG NC38
405	LIFTING PLUG NC38
406	LIFTING PLUG NC38
407	LIFTING PLUG NC38
408	3-1/2 OD DRILL PIPE, NC-38 CONN'S
409	LIFTING PLUG NC38
410	3-1/2 OD DRILL PIPE, NC-38 CONN'S
411	3-1/2 OD DRILL PIPE, NC-38 CONN'S
412	LIFTING PLUG NC38
413	3-1/2 OD DRILL PIPE, NC-38 CONN'S
414	LIFTING PLUG NC46
415	3-1/2 OD DRILL PIPE, NC-38 CONN'S
416	LIFTING PLUG NC46
417	3-1/2 OD DRILL PIPE, NC-38 CONN'S
418	LIFTING PLUG NC46
419	LIFTING PLUG NC46
420	LIFTING PLUG NC46
421	3-1/2 OD DRILL PIPE, NC-38 CONN'S
422	LIFTING PLUG NC46
423	3-1/2 OD DRILL PIPE, NC-38 CONN'S
424	LIFTING PLUG NC46
425	3-1/2 OD DRILL PIPE, NC-38 CONN'S
426	LIFTING PLUG NC46
427	3-1/2 OD DRILL PIPE, NC-38 CONN'S
428	LIFTING PLUG 6 5/8 REG
429	3-1/2 OD DRILL PIPE, NC-38 CONN'S
430	LIFTING PLUG 6 5/8 REG
431	3-1/2 OD DRILL PIPE, NC-38 CONN'S
432	LIFTING PLUG 6 5/8 REG
433	3-1/2 OD DRILL PIPE, NC-38 CONN'S
434	3-1/2 OD DRILL PIPE, NC-38 CONN'S
435	LIFTING PLUG 6 5/8 REG
436	3-1/2 OD DRILL PIPE, NC-38 CONN'S
437	3-1/2 OD DRILL PIPE, NC-38 CONN'S
438	3-1/2 OD DRILL PIPE, NC-38 CONN'S
439	3-1/2 OD DRILL PIPE, NC-38 CONN'S
440	3-1/2 OD DRILL PIPE, NC-38 CONN'S
441	LIFTING PLUG 6 5/8 REG
442	LIFTING PLUG 6 5/8 REG
443	LIFTING PLUG 6 5/8 REG
444	LIFTING PLUG 6 5/8 REG

445	LIFTING PLUG NC46
446	LIFTING PLUG NC46
447	LIFTING PLUG NC46
448	LIFTING PLUG NC46
449	LIFTING PLUG NC46
450	LIFTING PLUG NC46
451	LIFTING PLUG NC46
452	LIFTING PLUG NC46
453	LIFTING PLUG NC46
454	PONY DRILL COLLAR 8" X 3", 6 5/8 WP CONN'S
455	CIRCULATING SWAGE PIN 13.3/8BTC X BOX NC40
456	CIRCULATING SWAGE PIN 9.5/8BTC X BOX NC40
457	X-OVER BOX NC-46 X PIN 6 5/8 WP
458	3 1/2" KELLY BOX 6 5/8 WPL X PIN
459	4 1/4" KELLY BOX 6 5/8 WPL X PIN
460	CALIBRATION CIRCLE 8 - 15
461	ROLLER KELLY BUSHING 3 1/2 X 331
462	5 1/4 ROLLER KELLY BUSING
463	8 1/2" BIT BREAKER
464	6 1/2" BIT BREAKER
465	6 3/8" BIT BREAKER
466	4 1/2" SDML DRILL PIPE SLIPS
467	3 1/2" DRILL PIPE SLIPS BVM
468	CASING SCRAPER 7 3 1/2 REG
469	FLANGE 13 5/8 5000PSI X 13 5/8 5
470	FLANGE 13 5/8 5000 PSI X 13 5/8 3
471	CUP TESTER 9 5/8" BOX X PIN 4" JP
472	MUD BUCKET 2 7/8 - 5
473	22" MASTER BUSHING
474	ELEVATOR BAILS VARCO
475	MUD GUN 3"
476	MUD GUN 3"
477	MUD GUN 3"
478	MUD GUN 3"
479	MUD GUN 3"
480	MUD GUN 3"
481	MUD GUN 3"
482	MUD GUN 3"
483	MUD GUN 3"
484	MUD GUN 3"
485	3-1/2 OD DRILL PIPE, NC-38 CONN'S
486	3-1/2 OD DRILL PIPE, NC-38 CONN'S
487	3-1/2 OD DRILL PIPE, NC-38 CONN'S
488	3-1/2 OD DRILL PIPE, NC-38 CONN'S
489	3-1/2 OD DRILL PIPE, NC-38 CONN'S
490	3-1/2 OD DRILL PIPE, NC-38 CONN'S
491	3-1/2 OD DRILL PIPE, NC-38 CONN'S
492	3-1/2 OD DRILL PIPE, NC-38 CONN'S
493	3-1/2 OD DRILL PIPE, NC-38 CONN'S
494	3-1/2 OD DRILL PIPE, NC-38 CONN'S
495	3-1/2 OD DRILL PIPE, NC-38 CONN'S
496	3-1/2 OD DRILL PIPE, NC-38 CONN'S
497	3-1/2 OD DRILL PIPE, NC-38 CONN'S
498	3-1/2 OD DRILL PIPE, NC-38 CONN'S
499	3-1/2 OD DRILL PIPE, NC-38 CONN'S
500	3-1/2 OD DRILL PIPE, NC-38 CONN'S

501	3-1/2 OD DRILL PIPE, NC-38 CONN'S
502	3-1/2 OD DRILL PIPE, NC-38 CONN'S
503	3-1/2 OD DRILL PIPE, NC-38 CONN'S
504	3-1/2 OD DRILL PIPE, NC-38 CONN'S
505	MUD TANK #2
506	PRESSURE TANK CCCP 2,5 M 3
507	WATER TANK
508	PRESSURE TANK, KOMNINO K-250-1.25
509	PRESSURE TANK, KOMNINO K-2500/L-1,4
510	MUD TANK #2
511	MUD TANK #3
512	DIESEL TANK V=32M3
513	WASTE TANK, V 19 M3
514	WASTE TANK, V 19 M3
515	SHAKER TANK
516	TRIP TANK
517	RESERVE MUD TANK
518	CLOSED TANK, VOL 20 M3
519	CENTRIFUGE JUNCTION BOX, PRODUCER-BRANDT, T
520	POWER DISTRIBUTION BOX WITH MAIN SWITCH
521	POWER DISTRIBUTION BOX AD VIGANO EJB7A EX, 400V
522	POWER DISTRIBUTION BOX ITALSMEA EJB6, 400V
523	POWER DISTRIBUTION BOX ITALSMEA EJB6, 400V
524	POWER DISTRIBUTION BOX ADVIGANO EJB7A, 230 V
525	INDUSTRIAL MONITORING CAMERA SYSTEM,(CCS),
526	CAMERA SYSTEM HI-TEC, TYP EX - PROOF FOR MONITORING
527	WIRE WINCH MATHEY GCSB2, 1,5 T
528	AIR WINCH INGERSOLL-RAND LS2-600R-PH2M-
529	CHAIN HOIST PFAFF 0867062, 10 T CAPACITY
530	CHAIN HOIST PFAFF 0867062, UDŽWIG 10 T CAPACITY
531	CHAIN HOIST PFAFF SILVERLINE STIRA S 0867
532	HYDRAULIC WINCH BRADEN PD12C-SPL-59039-02-1
533	AIR WINCH INGERSOLL RAND FA51-24XK1-CE,
534	AIR WINCH INGERSOLL RAND BU7APTAB
535	AIR DRYER ULTRATROC, TYP SD 0300 ,MODEL 413
536	AIR DRYER ULTRAFILTER HED 550
537	TUBULAR BOX 10,6 M X 2,4 M X 1,8 M
538	TR800 PUMP HALL TRANSPORT CONTAINER
539	CONTAINER 20' WAREHOUSE
540	TUBULAR BOX 10,6 M X 2,4 M X 1,75 M
541	CONTAINER 40' PACKAGE
542	TUBULAR BOX 2,30 X 1,75 X 10,60 M
543	CONTAINER 20' AIR COMPRESORHOUSE
544	PUMP STROKE COUNTER - MWU
545	6 1/2"-12 1/2" ADJUSTABLE GAUGE STABILIZER
546	HYDRAULIC PULLER, ENERPAC, BHP 551G
547	TONG PULL LINE SYSTEM
548	CATHEAD
549	CATHEAD
550	CONTAINER 20' STORE
551	CONTAINER 20' - MECHANIC WORKSHOP
552	CONTAINER 40' MECHANIC WORKSHOP
553	CONTAINER 40' ACCOMODATION ROOM
554	CONTAINER 20' CORE WAREHOUSE SOCIAL WAREHOUSE
555	CONTAINER 20' TOOLPUSHER OFFICE
556	CONTAINER 20 WASHROOM WC

557	CONTAINER 20' BATHROOM
558	CONTAINER 20' GREASE WAREHOUSE
559	CONTAINER 40' CHANGING ROOM
560	CONTAINER 40' WAITING ROOM DINNING ROOM CHANGING ROOM
561	CONTAINER 40' ELECTRIC MECHANIC WAREHOUSE
562	CONTAINER 20' CHANGING ROOM COMPANY MAN OFFICE
563	CONTAINER 40' TOOLPUSHER OFFICE
564	FLOCATION STATION OILTOOLS
565	CONTAINER 40' TOOLPUSHER OFFICE
566	CONTAINER 40'
567	CONTAINER BOILER HOUSE 3,10 X 10,70 X 2,95 M
568	CONTAINER 20' DRYER CONTAINER
569	CONTAINER 40' DINING ROOM MESS
570	CONTAINER 40' WAREHOUSE STOREMAN OFFICE
571	HYDROFOR PUMP TYPE K80-65-160 Z SILN.7.5X3
572	HYDROFOR PUMP TYPE K80-65-160 Z SILN.7.5X3
573	HYDROFOR PUMP TYPE K80-65-160 Z SILN.7.5X3
574	HYDROFOR PUMP TYPE K80-65-160 Z SILN.7.5X3
575	WATER PUMP GRUNDFOS
576	ELECTRIC WELDING MACHINE DUGA 318M/AKT0208
577	GAS WELDING BURNER SET (ACETYLENE, OXYGEN)/ AKT 0448
578	FRIDGE DAEWOO FR-146R/AKT0655
579	FRIDGE DAEWOO FR-146R/AKT0656
580	FRIDGE EUROLUX HS-120L/AKT0657
581	FRIDGE EUROLUX HS-120L/AKT0658
582	5" DRILL PIPE ELEVATOR B+ V, 250 SHT, (5/940)
583	VIBRATORY RAMMER SF 460 WITH HONDA MOTOR/AKT0548
584	SINGLE WALL DIESEL TANK, VOL. 63 M3/ AKT04
585	TV TOSHIBA 24HV10G/AKT0660
586	TUBULAR BOX LENGTH 10,42M X WIDTH 2,36M
587	TUBULAR BOX LENDTH 10,92M X WIDTH 2,4M
588	DRILL PIPE FRAME - HAND MADE
589	TABLE/AKT0648
590	TABLE/AKT0649
591	TABLE/AKT0635
592	TABLE/AKT0623
593	TABLE/AKT0624
594	TABLE/AKT0625
595	TABLE/AKT0626
596	CHAIR/AKT0609
597	CHAIR/AKT0610
598	CHAIR/AKT0611
599	CHAIR/AKT0612
600	CHAIR/AKT0613
601	CHAIR/AKT0614
602	CONTAINER 40' MECHANICAL WAREHOUSE/KZL0618
603	CHAIR/AKT0615
604	CONTAINER 40' ACCOMODATION ROOM/AKT0410
605	CHAIR/AKT0616
606	CONTAINER 40' ACCOMODATION ROOM/AKT0411
607	CHAIR/AKT0617
608	CHAIR/AKT0618
609	CABINET/AKT0636
610	CABINET/AKT0637
611	CABINET/AKT0638
612	CABINET/AKT0639

613	CABINET/AKT0640
614	CONTAINER 40' CLINIC/806-OT-040
615	CABINET/AKT0641
616	CONTAINER 20' FOR GENERATOR SET / AKT0726
617	SAFE SS 030/AKT0144
618	LIBRARY, STANDING TYPE, DIMENSIONS: HEIGHT 1,9MX WIDTH
619	LIBRARY, STANDING TYPE, DIMENSIONS: HEIGHT 1,9MX WIDTH
620	LIBRARY, STANDING TYPE, DIMENSIONS: HEIGHT 1,9MX WIDTH
621	WALL CABINET, DIMENSIONS: HEIGHT 082M X WIDTH 0,36V X
622	CABINET/AKT0642
623	WALL CABINET, DIMENSIONS: HEIGHT082M X WIDTH 0,36V X
624	CABINET/AKT0631
625	WALL CABINET, MADE IN KAZACHSTAN, DIMENSIONS HEIGHT
626	CABINET/AKT0632
627	TABLE 161/AKT0374
628	TABLE 160/AKT0376
629	TABLE 160/AKT0377
630	CABINET/AKT0633
631	CABINET/AKT0634
632	COMPUTER TABLE MADE IN KAZACHSTAN, STANDING TYPE, DIMENSIONS
633	OPEN CABINET/AKT0651
634	CHAIR NOWY STYL, ISO BLACK MULTI PACK /AKT0389
635	CHAIR NOWY STYL, ISO BLACK MULTI PACK /AKT0386
636	OPEN CABINET
637	CHAIR NOWY STYL, ISO BLACK MULTI PACK /AKT0385
638	CHAIR NOWY STYL, ISO BLACK MULTI PACK /AKT0384
639	WALL CABINET/AKT0653
640	CHAIR NOWY STYL, ISO BLACK MULTI PACK /AKT0383
641	CHAIR NOWY STYL, ISO BLACK MULTI PACK /AKT0382
642	WALL CABINET/AKT0654
643	WALL CABINET/AKT0643
644	CHAIR, PERFEKT GTR C-368/AKT0378
645	WALL CABINET/AKT0644
646	CHAIR , PERFEKT GTR C-368/AKT0379
647	WALL WARDROBE/AKT0645
648	CHAIR, PERFEKT GTR C-368/AKT0381
649	ALUMINUM LADDER / AKT0601
650	ALUMINUM LADDER / AKT0602
651	ALUMINUM LADDER STAIRS / AKT0603
652	EYE WASHING DEVICE SELLSTROM 90510 /
653	EYE WASHING DEVICE SELLSTROM 90510 /
654	ARMCHAIR/AKT0606
655	ARMCHAIR/AKT0607
656	ARMCHAIR/AKT0608
657	SHELVES WITH CORNERS/AKT0627
658	SHELVES WITH CORNERS/AKT0628
659	SHELVES WITH CORNERS/AKT0629
660	SHELVES WITH CORNERS/AKT0630
661	FRAME/AKT0647
662	TABLE/AKT0650
663	WALL WARDROBE/AKT0646
664	WARDROBE CORNER/AKT0619
665	WARDROBE CORNER/AKT0620
666	WARDROBE CORNER/AKT0621
667	WARDROBE CORNER/AKT0622
668	STAINLESS TABLE / AKT-0711

669	WATER HEATER ARISTON PRO R80V/AKT0723
670	WATER HEATER ARISTON PRO R80V/AKT0724
671	VALVE 2" 5000 PSI OTECO XXH
672	VALVE 2" 5000 PSI OTECO XXH
673	VALVE 2" 5000 PSI OTECO XXH
674	6 5/8" CASING PROTECTOR CLAMP-ON
675	6 5/8" CASING PROTECTOR CLAMP-ON
676	6 5/8" CASING PROTECTOR CLAMP-ON
677	WILDEN PUMP
678	WILDEN PUMP
679	ELEVATOR BAILS
680	ELEVATOR BAILS
681	BRAKE BANDS FOR SKYTOP TR-800 DWKS
682	BRAKE BANDS FOR SKYTOP TR-800 DWKS
683	BEARING FOR THE ECCENTRIC SHAFT OF THE PZ8 PUMP - SET
684	BEARING FOR THE ECCENTRIC SHAFT OF THE PZ8 PUMP - SET
685	AIR MOTOR'S KELLY SPINER VARCO
686	BEARING FOR THE ECCENTRIC SHAFT OF THE PZ8 PUMP - SET
687	3 1/2" ROTARY HOSE (VIBRATOR) HU 4" 5000 PSI
688	ROTOR PUMP "MISSION" WITH ELECTRIC MOTOR 22,5 kW.
689	3 1/2" ROTARY HOSE (VIBRATOR) HU 4" 5000 PSI
690	EMERGENCY EXPLOSION-PROOF LAMP PROTECTA III 2 x 3
691	4" 5000 PSI ROTARY HOSE (VIBRATOR)
692	4" 5000 PSI GATE VALVE OTECO XXH
693	4"-4-7/8" DRILL COLLAR SLIPS DCS-S
694	HIGH PRESSURE HOSE 3 1/2" 5 000 PSI
695	HIGH PRESSURE HOSE 3 1/2" 5 000 PSI
696	HIGH PRESSURE HOSE 3 1/2" 5 000 PSI
697	WATERPROOF TARPAULIN - 2 SETS
698	WATERPROOF TARPAULIN - 2 SETS
699	PUP JOINT 4-1/16" 5K x 4-1/16" 5K (5 m)
700	3 1/2" 1002 HU 4" API ROTARY HOSE (VIBRATOR)
701	PUP JOINT 4-1/16" 5K x 4-1/16" 5K (5 m)
702	ROTARY HOSE (vibrator) 3 1/2" 1002 HU 4" API
703	ADAPTER 2-1/16" 5K RX-24 x 3-1/8" 5K RX
704	ELEVATOR BAILS
705	ADAPTER FLANGE 2-1/16" 5K RX-24 x 3-1/8" 5K RX
706	ELEVATOR BAILS
707	ADAPTER FLANGE 2-1/16" 5K RX-24 x 3-1/8" 5K RX
708	COFLEX 3 1/16" (5000 psi)
709	ADAPTER FLANGE 3-1/8" 5K RX x 3" Fig 1502 F
710	COFLEX 3 1/16" (5000 psi)
711	ADAPTER FLANGE 3-1/8" 5K RX x 3" Fig 1502 F
712	13 5/8" 3M ANNULAR BOP GK PACKER
713	ADAPTER FLANGE 4-1/16" 5K RX-39 FLANIEC x 3-1/8" 5K R
714	CABINET WITH FIRE PROTECTION EQUIPMENT
715	ADAPTER FLANGE 4-1/16" 5K RX-39 FLANIEC x 3-1/8" 5K R
716	ADAPTER FLANGE 4-1/16" 5K RX-39 Flaniec x 3-1/8" 5K R
717	ADAPTER AISI 4130 6A PSL3 NACE MR 01.75
718	CABINET WITH FIRE PROTECTION EQUIPMENT
719	CABINET WITH FIRE PROTECTION EQUIPMENT
720	ADAPTER AISI 4130 6A PSL3 NACE MR 01.75
721	CABINET WITH FIRE PROTECTION EQUIPMENT
722	ROTARY HOSE (Vibrator) 4" 1002
723	13 5/8" 5 000 BOP PACKER
724	VALVE IBOP

725	VALVE IBOP 7-3/4" OD 3-1/16" I
726	MUD PUMP PZ8 SUCTION MANIFOLD
727	X-OVER
728	CASING CROSSOVER 10 3/4" x 9 5/8"
729	MANUAL GATE VALVE 2 1/16" 5 000 PSI DS-PSL2 FC Cam
730	MANUAL GATE VALVE 2 1/16" 5 000 PSI DDS-PSL2SSRTJFC
731	MANUAL GATE VALVE 3 1/8" 5 000 PSI FC DDS-PSL2SSRTJ
732	MUD PUMP PZ8 MODULE
733	MUD PUMP PZ8 MODULE
734	ROTARY HOSE (Vibrator) 3 1/2" 1002 (3 m)
735	VALVE 2" x2" 1502 H2S 10M
736	ROTARY HOSE 3 1/2" (Vibrator) HU 4" 1502
737	MUD PUMP PZ8 MODULE
738	MUD PUMP PZ8 SUCTION MANIFOLD
739	MUD PUMP PZ8 DISCHARGE MANIFOLD
740	MUD PUMP PZ8 MODULE
741	5 1/4" KELLY BUSHING
742	ADAPTER FLANGE 3 1/8" 5K RX-24 x 3" Fig 1502 M
743	ROTARY HOSE 3 1/2" 5 000 PSI Fig 1002 (18 m)
744	ROTARY HOSE 3 1/2" 5 000 PSI
745	15 7/16" (15 1/2") STABILIZER SN. 3349-1
746	13 3/8" ELEVATOR s/n 1152-88
747	13 3/8" ELEVATOR s/n 39042-145
748	6 5/8" ELEVATOR s/n 510-9323
749	6 5/8" ELEVATOR s/n 510-9312
750	6 5/8" ELEVATOR s/n 43381
751	ELEVATOR 612540-Y-107 4' EU4.1/2' CL-250 API8C-PSL
752	7" ELEVATOR s/n 7593
753	9 5/8" ELEWATOR s/n 14981
754	9 5/8" ELEVATOR s/n 1984
755	9 5/8" ELEVATOR s/n 9253
756	MAIN PUMP BEARING
757	MAIN PUMP BEARING
758	MAIN PUMP BEARING
759	EMERGENCY EXPLOSION LAMP Protecta III 2 x 3
760	EMERGENCY EXPLOSION LAMP Protecta III 2 x 3
761	CONTAINER 40' DAY ROOM WAREHOUSE
762	CONTAINER 40' ACCOMODATION ROOM
763	CONTAINER 20' STORE
764	CONTAINER 40' ACCOMODATION ROOM
765	ACCOMODATION CONTAINER 40'
766	ACCOMODATION CONTAINER 40'
767	ACCOMODATION CONTAINER 40'
768	ACCOMODATION CONTAINER 40'
769	CONTAINER 40' ACCOMODATION ROOM/806-OT-003/
770	CONTAINER 40' ACCOMODATION ROOM/806-OT-008/
771	SEPTIC TANK VOL. 22 340 LITERS
772	SATELLITE ANTENNA
773	CONTAINER 40' ACCOMODATION ROOM/806-OT-022
774	CONTAINER 40' ACCOMODATION ROOM/806-OT-028
775	CONTAINER 40' ACCOMODATION ROOM/806-OT-030
776	CONTAINER 40' BATHROOM/806-OT-032
777	CONTAINER 40' KITCHEN/806-OT-037
778	CONTAINER 40' DINING ROOM/806-OT-036
779	KETTLE FIRST, FA 5411-1/AKT0588
780	TWO-DOOR WARDROBE/AKT0663

Appendix no.3 to agreement- List of items sold as the drilling rig – Rig inventory – materials;

LP	Material Description		Q-ty
1	Pipe Ramp	PCS	14,000
2	Platform Made of Metal Grid	PCS	4,000
3	Mill Holder MK type 61-120	PCS	1,000
4	Engineering Bench Vice	PCS	3,000
5	Electric Power Bench Grinder	PCS	1,000
6	Electric Power Straight Grinder	PCS	1,000
7	Electric Bench Drill	PCS	3,000
8	RECTIFIER STEF-POL 12/24V 30A EST 310	PCS	1,000
9	TORQUE WRENCH	PCS	2,000
10	MANUAL LUBRICATOR	PCS	3,000
11	BEARING PULLER	PCS	1,000
12	TIRE INFLATION GUN	PCS	1,000
13	HYDRAULIC VALVE SEAT PULLER	PCS	1,000
14	CHAINSAW	PCS	1,000
15	SAW BLADE SHARPENER	PCS	1,000
16	METAL WASTEBASKET	PCS	3,000
17	COMBINATION STRAPPING TOOL	PCS	1,000
18	WHITE MAGNETIC BOARD	PCS	2,000
19	EMERGENCY HAND OPERATED SIREN	PCS	1,000
20	STRETCHER	PCS	2,000
21	WASHING MACHINE	PCS	1,000
22	INDUSTRIAL VACUUM CLEANER KARCHER	PCS	1,000
23	REFRIGERATOR TS-135-138	PCS	1,000
24	REFRIGERATOR MASTERCOOK	PCS	1,000
25	SAFETY BOX GERONIMO	PCS	1,000
26	3 1/2" DRILL PIPE SCREEN	PCS	1,000
27	5" DRILL PIPE SCREEN	PCS	2,000
28	X-OVER PIN NC38 X BOX NC46	PCS	1,000
29	X-OVER BOX NC50 X PIN NC38	PCS	5,000
30	X-OVER BOX 5 1/2"SP X PIN NC50	PCS	1,000
31	X-OVER PIN X BOX NC38	PCS	2,000
32	X-OVER BOX NC50 X PIN 6 5/8"WP	PCS	1,000
33	X-OVER BOX X PIN NC50 -3 FEET LENGHT	PCS	3,000
34	X-OVER PIN 6 5/8" REG X BOX 4" IF	PCS	2,000
35	Bit Sub BOX 3 1/2" REG X BOX NC38	PCS	2,000
36	X-OVER BOX X BOX 6 5/8"WP	PCS	3,000
37	X-OVER BOX NC38 X PIN 2 3/8"RWS	PCS	1,000
38	JUNK SUB 6 1/2" -4 1/2"WP	PCS	1,000
39	JUNK SUB 308MM	PCS	1,000
40	JUNK SUB 12 1/4" (311)	PCS	1,000
41	X-OVER PIN 6 5/8"WPL X PIN 5 1/2"WPL	PCS	2,000
42	X-OVER PIN NC50 X BOX NC46	PCS	2,000
43	X-OVER PIN 4" IF X BOX NC50	PCS	7,000
44	X-OVER BOX X PIN 4" IF	PCS	2,000
45	Bit Sub BOX 4 1/2" REG X BOX 4" IF	PCS	3,000
46	CORE BARREL HEAVY DUTY XO 6 3/4'	PCS	1,000
47	CORE BREAKER 4"	PCS	1,000
48	Right Hand Plug Tap 3 1/2" FH	PCS	1,000
49	Right Hand Plug Tap 4 1/2" FH	PCS	2,000
50	Right Hand Plug Tap 4 1/2" IF	PCS	1,000
51	Plug Tap 3 1/2" REG LH	PCS	1,000
52	Plug Tap 4 1/2" IF LH	PCS	1,000
53	Hydraulic Crimper PH-43	PCS	1,000
54	Guillotine Paper Cutter	PCS	1,000
55	LAMINATOR MACHINE	PCS	1,000

56	Acetylene pressure reducer	PCS	1,000
57	SOLDERING IRON	PCS	1,000
58	Plastic Pallet Box Sleeve	PCS	4,000
59	Chain Block 3T	PCS	2,000
60	Hydraulic Jack 25T	PCS	1,000
61	Press Cleaning Trolley 20L	PCS	1,000
62	TRANSPORT TROLLEY	PCS	1,000
63	ELECTRIC OIL PUMP	PCS	1,000
64	Oil Hand Pump	PCS	2,000
65	HYDRO-VACUUM PUMP SKA 8.02 11KW	PCS	1,000
66	High Pressure Liquid Ring Vacuum Pump SK-3 1,1KW 380V	PCS	2,000
67	HYDROPHORE PUMP WITH ELECTRIC MOTOR	PCS	3,000
68	AIR COMPRESSOR	PCS	1,000
69	AIR CONDITIONER	PCS	11,000
70	PRESSURE TRANSDUCER	PCS	3,000
71	WARNING LAMP LBO-10T 24V DC	PCS	1,000
72	FLUID LEVEL INDICATOR	PCS	1,000
73	EXTERNAL HARD DRIVE	PCS	1,000
74	PROGRAM MS OFFICE 2007 PL	PCS	1,000
75	PROGRAM MS OFFICE 2010 HOME AND BUSINESS PL	PCS	1,000
76	INTERNET CAMERA	PCS	1,000
77	Switch	PCS	1,000
78	Paper Shredder	PCS	1,000
79	UNIVERSAL METER	PCS	2,000
80	Time Sensor	PCS	1,000
81	DIGITAL TACHOMETER	PCS	1,000
82	Electronic Scale	PCS	1,000
83	MUD LEVEL INDICATOR	PCS	1,000
84	Gas Nozzle with Mechanical Counter	PCS	1,000
85	BATTERY CHARGER	PCS	1,000
86	ANEMOMETER A-843S	PCS	1,000
87	SPEED TRANSMITTER V-821	PCS	1,000
88	ANEMOMETER RECEIVER A-843S	PCS	1,000
89	SAMSUNG DIGITAL CAMERA	PCS	1,000
90	SAFETY SHOWER	PCS	1,000
91	ELECTROMOTOR 4KW	PCS	1,000
92	ELECTROMOTOR 11KW	PCS	2,000
93	ELECTROMOTOR 37KW	PCS	1,000
94	ELECTROMOTOR 40KW	PCS	1,000
95	Electricity distribution box	PCS	5,000
96	Explosion-proof Power Distribution Box	PCS	3,000
97	INDUSTRIAL ELECTRICAL HEATER	PCS	6,000
98	Phase sequence and motor rotation tester TKF-12	PCS	1,000
99	CORD LY240	M	25,000
100	CORD OPD 3 X 1,5	M	100,000
101	CORD OPD 3 X 2,5	M	100,000
102	CORD OPD 4 X 2,5	M	100,000
103	CORD OPD 5 X 4	M	100,000
104	CORD OPD 5 X 25	M	100,000
105	CORD OPD 5 X 35	M	100,000
106	CRIMPER	PCS	1,000
107	CRIMPER WS-H 0,14-4MM2	PCS	1,000
108	EXTRACTING TOOL E-H1	PCS	1,000
109	Projector mercury-vapour lamp THORN-400	PCS	8,000
110	EXPLOSION PROOF TORCH	PCS	2,000
111	CABLE RACKS	PCS	50,000
112	ACCUMULATOR 12V 190AH	PCS	2,000
113	ACCUMULATOR 12V 180AH 1100A	PCS	4,000
114	4-BURNER ELECTRIC STOVE	PCS	1,000

115	ELECTRIC HEATER	PCS	4,000
116	MOBILE PHONE NOKIA	PCS	1,000
117	MICROWAVE	PCS	2,000
118	TOOL BOX	PCS	6,000
119	PLASTIC STAORAGE TUB	PCS	2,000
120	PORTABLE SPILL KIT	PCS	1,000
121	FIRE PROTECTION STAND	PCS	3,000
122	STORAGE SHELF	PCS	2,000
123	WARDROBE LOCKERS	PCS	2,000
124	DESK	PCS	1,000
125	METAL STORAGE CABINETS	PCS	29,000
126	SWIVEL CHAIR	PCS	1,000
127	STAND BOARD	PCS	1,000
128	TARPAULIN FOR RIG FLOOR TR-800	SET	1,000
129	TARPAULIN FOR MONKEY BOARD TR-800	SET	2,000
130	TARPAULIN TR-800	SET	1,000
131	TARPAULIN FOR ACTUATORS TR-800	SET	1,000
132	TARPAULIN FOR RIG FLOOR TR-800	SET	1,000
133	Protective tarpaulin	PCS	3,000
134	Clamp meter	PCS	1,000
135	Hydraulic Crimper	PCS	1,000

Appendix no. 4 to agreement - Technical audit report dated 30.04.2021

Technical audit report "EXALO Drilling S.A."**Branch Office - Kazakhstan**
97. Zholdasbekova Str. Samal - 2
Business Center "Samal Towers"
050051 Almaty, Kazakhstan
Tel/Fax: +7 (727) 227 96 88
Tel/Fax: +7 (727) 227 97 01
E-mail: almaty.office@exalo.pl**Checked area:**
Aktobe region, Zhanazhol district, MB-Trans base
Date 30.04.2021 г.

According to contract No. 45-21 dated April 28, 2021 "On conducting a technical audit" of the Skytop Brewster-TR-800 Self-Propelled Drilling Rig, BU # 105

Representatives of the Customer "Exalo Drilling S.A."
Ryszard Pawlowski**Specialist of «Zhigermunaiservice» LLP**Mukhatov R. Head of Non-Destructive Testing Laboratory
Martynyuk B Chief Drilling Mechanic
Ibetov M. Chief Power Engineer of Drilling Rigs**Main characteristics of the drilling machine Skytop Brewster TR**Date of issue: 1992 year
Manufacturer: USA
Maximum lifting capacity -186 tons
Mast height - 35 meters
Maximum drilling depth - 3400 meters
Type: DieselDrilling Rig Location: Kazakhstan, Aktobe region, Zhanazhol district, MB-Trans base.
1.1 Investigation of the state of the TR 800 drilling rig, which is a self-propelled drilling rig. The TR 800 drilling rig is currently assembled and stacked stationary when viewed during an audit.**1.2 Audit report**

The purpose of the survey is to visually inspect the TR-800 self-propelled drilling rig and determine the condition of the equipment. ZMS specialists were instructed to visit the drilling rig for an inspection in order to: Report the general condition of the drilling rigs in accordance with the equipment list provided by Exalo Drilling. This check will help the Client to determine the general condition of the machine after a long downtime, followed by the issuance of recommendations and proposals for further operation or replacement of equipment.

1.3 The purpose of the audit

- The survey was aimed at assessing and determining the status with respect to API specifications and recommendations.

- The compliance to the internationally recognized technical standards, accepted operating and safety practices in oil fields, as well as manufacturer's instructions for operation and maintenance.
- Maintenance status and adherence to plant preventive maintenance instructions for the rig and associated equipment.
- The general condition of the equipment and the possibility of restarting the drilling rigs.

Reference

API 4G
API 8B
API 7L
API 510
API 7K
ASTM E-709

1.4 Specifications

The specifications below have been cross-referenced in the condition survey and technical assessment. They were the basis for testing and guidelines for compliance with the minimum of equipment or system.

1. Drilling and safety standards API 4 G, API 8B, API 7L, API 510, ASTM E-709, API STD 53, API16A, API16C, API RP13C, API RP54, API RP8A, API9A

1.5 Survey and visual inspection

The audit of all equipment was carried out and consisted of no operational tests during the auditor's attendance on site. All equipment was installed and no functional operations were observed during the audit.

All major equipment was visually inspected to confirm the current status and to determine what maintenance work has been carried out since the rig was withdrawn from the contract. Including, but not limited to:

Drilling equipment

- Drawworks
- Crown assembly
- Mast
- Substructure
- Lifting equipment

Low / High pressure line

- Mud pumps
- Circulation system
- Measurer
- Choke manifold

The rig survey was carried out on site for 4 days. ZMS conducted all technical evaluations in accordance with the scope of work, industry practices, API minimum practices and equipment recommendations. The main focus was on the general condition of the equipment.

In general, most of the equipment is NOT suitable for its intended use, however, if the Client determines the need for appropriate drilling rigs, they can be repaired and tested before new contracts are awarded.

It should be noted that during this survey, the Customer's representative was very active and helped with the assessment and provided advice on equipment location, history and specific audits. Visual inspections were conducted to ensure compliance with API specifications guidelines, relevant company policies and procedures, regulatory reference standards detailed by API.

Documentation for the rigs in question was not onsite and was not provided: current certifications, registers, maintenance history of operation manuals, NDT reports.

1.6 Problems

1. No record of CAT III inspections was available for the majority of equipment
2. CAT IV certification was not sighted for the major rig equipment and likely expired during the six (6) years in the yard
3. There is no indication of a pressure gauge certification. APV certification, PRV certification.
4. All rubber products and hoses have been exposed to direct weather for six (6) years and generally require complete replacement.
5. There is no evidence preservation equipment prior to shipment, or within six (6) years.
6. The equipment does not have fire and gas appliances installed.
7. Electrical junction boxes and electric motors are not certified. The electrical cables of the equipment are in poor general condition and the insulation is damaged in many places.
8. One equipment is stacked on top of each other and is not available for detailed assessment.

1.7 Conclusion

The rigs have been idling for six (6) years or longer.

All major equipment of the asset must be fully serviced, repaired and re-certified before any further operations. Full re-certification of rigs for CAT III and IV requirements must be completed.

The appearance and condition of the drilling rigs indicate a number of problems and the general condition is unsatisfactory, and this must be resolved before any future operations can begin. During this study, a significant number of problems were identified that require corrective action before these rigs can be used.

2.1 Drilling Rig Design / Drilling Rig Information

2.2 Data / information on a drilling rig

Type of instalation	Self-propelled mechanical drilling rig TR 800
Production	Skytop Brewster
Country of manufacture	USA
Year of issue	1992 year
Mast height	35 meters
Maximum lifting capacity	168 tons
Base height	3,8 meters
Maximum volume of measuring tanks	178 m3

2.3 Certification overview

Currently stored in a warehouse in a motionless state Kazakhstan Aktobe region Zhanazhol district. There is currently no certification program for the rig. At the time of the audit, no plans or budgets had been prepared for the certification of the drilling rigs.

Mast Inventory № 510-0000004

Pictures





Description

The Mast observed corroded throughout the structure. Hindered access to Masts due to 2 masts are laying on top of each other. The mast requires complete disassemble, sandblasting and painting. The mast requires CAT III and IV NDE inspection. The mast ladder require maintenance. All ropes require inspection and/or replacement. There are no identification tags on the slings, discovered some corrosions. Recommendation to replace all low and high-pressure hoses, they have been exposed to weather conditions. Due to weather conditions all cables been defected, require full replacement.

Substructure Inventory № 510-0203

Pictures



Description

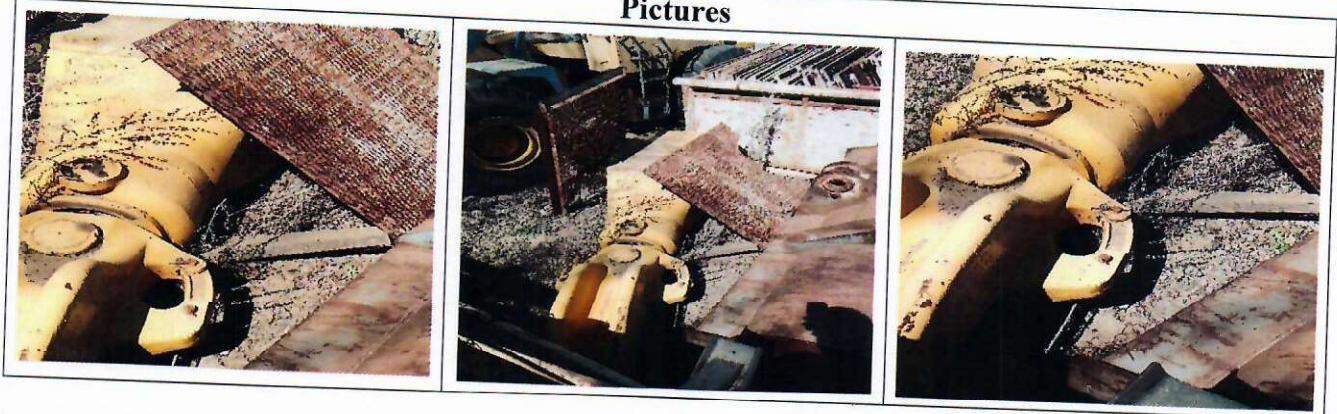
The Rig Substructure been corroded throughout the hull and requires sandblasting and painting. The floors are rotten and require replacement. Deformation of the side struts require replacement. Oil leaked on 2 pcs Jacks, need complete revision and replacement of spare parts. On High Pressure Receiver observed unnecessary hole. Wheelsets rubber all in cracks due to improper storage and weather conditions are not suitable for use. The base of the TR-800 Drilling Rig needs detailed CAT IV inspection of each element. During the inspection, access was restricted as the equipment lay on top of each other.

Drawworks Inventory № 510-001204**Description**

The equipment has been exposed to weather conditions without proper storage (conservation), covered with corrosion. All hoses require replacement to prevent oil leakage to the environment. A thorough inspection of all parts using the NDE is required. No maintenance schedule was provided. There are no certificates for the last test of the drawworks.

Crown Block Inventory № 510-00050**Pictures****Description**

Due to weather conditions and without proper storage, corrosion of the base metal was found, the development of a recess for the rope. One of the sheave wheel does not turn, need to be rigged down the pulleys and NDE-API 8B cat IV inspection is required, the bearings must be replaced. Lack of test certificates under load, NDE certificates.

Travel Block & Hook Block Inventory № 510-00055**Pictures****Description**

Travel Block & Hook Block has been found to be corroded throughout the hull requiring sandblasting and painting. Detailed API 8B cat IV inspection of each item is required. A complete disassembly of the equipment is required to inspect the mechanical parts of the replacement of bearings and spare parts.

During the inspection, access was restricted as the equipment was lying on the ground.

Top Drive

There no Top Drive on the yard.

Swivel Inventory № 510-00086

Pictures



Description

A complete disassembly of the swivel is required, check of all mechanical parts, replacement of spare parts, since oil leaks, corrosion were found throughout the body, cleaning and painting work is required. Detailed API 8B cat IV inspection of each item is required. Lack of repair schedule plan, inspection certificates.

Turn-table Inventory № 510-000138

Pictures



Description

Some parts are missing, complete disassembly and mechanical inspection required. NDE inspection required. Inspection certificates are missing

Manifold line Inventory № 510-9415-0023

Pictures



Description

All valves require detailed inspection and maintenance followed by a pressure test. Corrosion is detected on the inside diameter of the line and requires API 510 gauge inspection and inspection of all welds. The entire line needs cleaning and painting. Lack of pressure test and NDE certificates.

Mud tank 187 m3 for drilling mud № 1 Inventory № 604-00084

Pictures

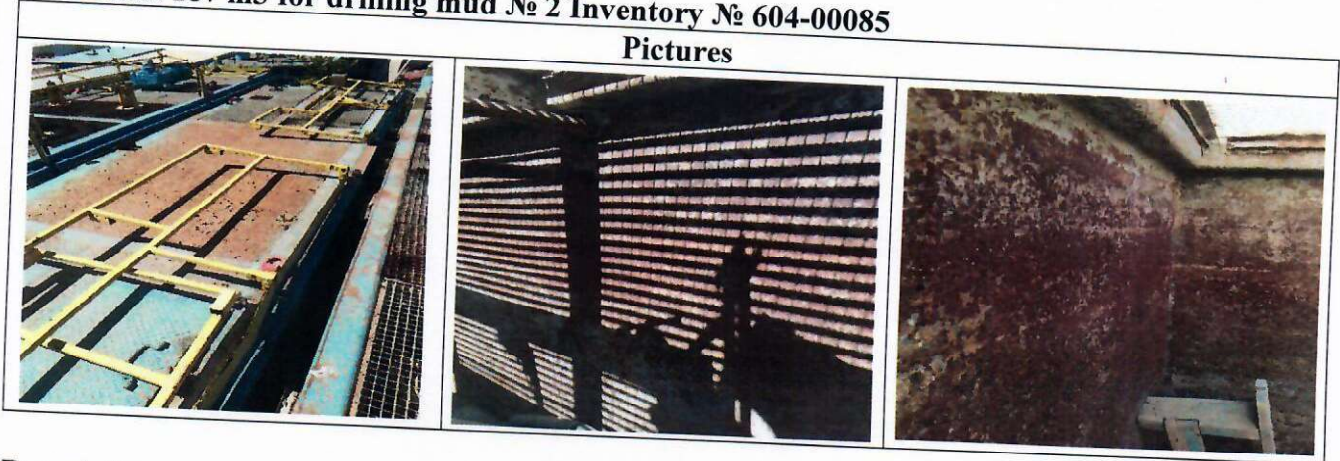


Description

The supports and frame are destroyed by corrosion. Ceiling reinforcement is rotten due to corrosion. Internal partitions covered with rust all over the surface. Handrails need repair and replacement as necessary where corrosion is present. The grates on the top of the tank must be securely fastened and most of them need to be replaced. Before repair work, it is necessary to measure the wall thickness so there is strong corrosion. Due to weather conditions and without proper storage, cleaning and painting work is required.

Mud tank 187 m3 for drilling mud № 2 Inventory № 604-00085

Pictures

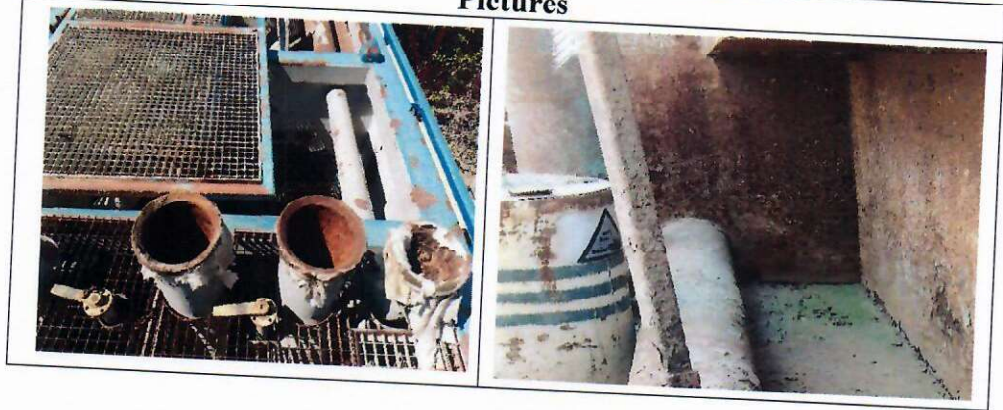


Description

The supports and frames destroyed by corrosion. Ceiling reinforcement is rotten due to corrosion. Internal partitions covered with rust all over the surface. Handrails need repair and replaced as necessary where corrosion is present. The grates on the top of the tank must securely fastened and most of them need replacement. Before repair work, it is necessary to measure the wall thickness so there is strong corrosion. Due to weather conditions and without proper storage, cleaning and painting work is required.

Mud tank 9,7 m3 for drilling mud № 3 Inventory № 604-000235

Pictures



Description

Internal partitions covered with rust all over the surface. The grates on the top of the tank must be securely fastened and most of them need to be replaced. Before repair work, it is necessary to measure the wall thickness so there is strong corrosion. Due to weather conditions and without proper storage, sandblasting and painting are required.

Water tank 64 m3 Inventory № 604-000234

Pictures

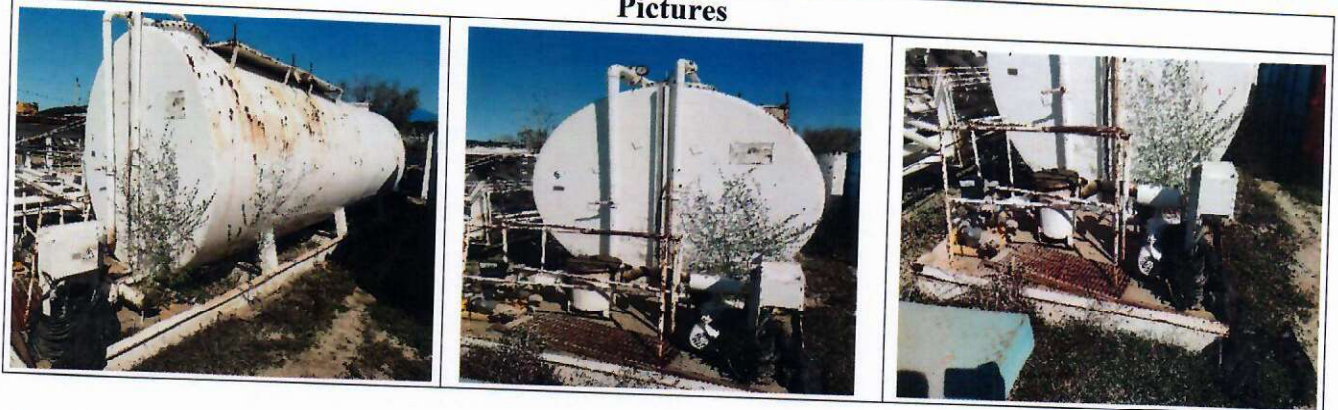


Description

Before repair work, it is necessary to measure the wall thickness as there is severe corrosion. Due to weather conditions and without proper storage, sandblasting and painting are required.

Oil Tank 32 m3 Inventory № 604-00088

Pictures



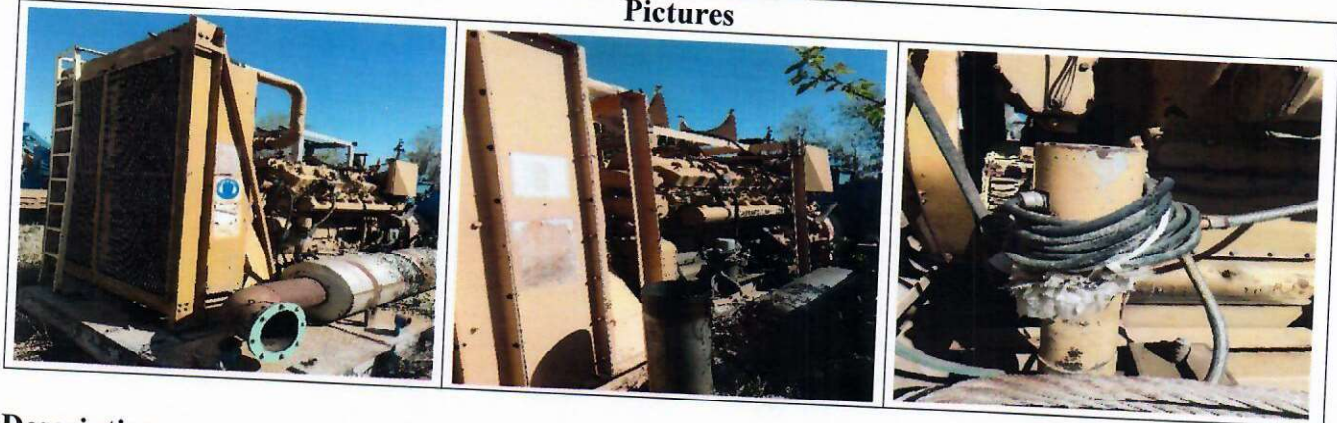
Description

The pump with an electric motor requires detailed inspection and maintenance. The ladder must be modified for safe movement. Corrosion over the entire surface of the container. The electric cables are

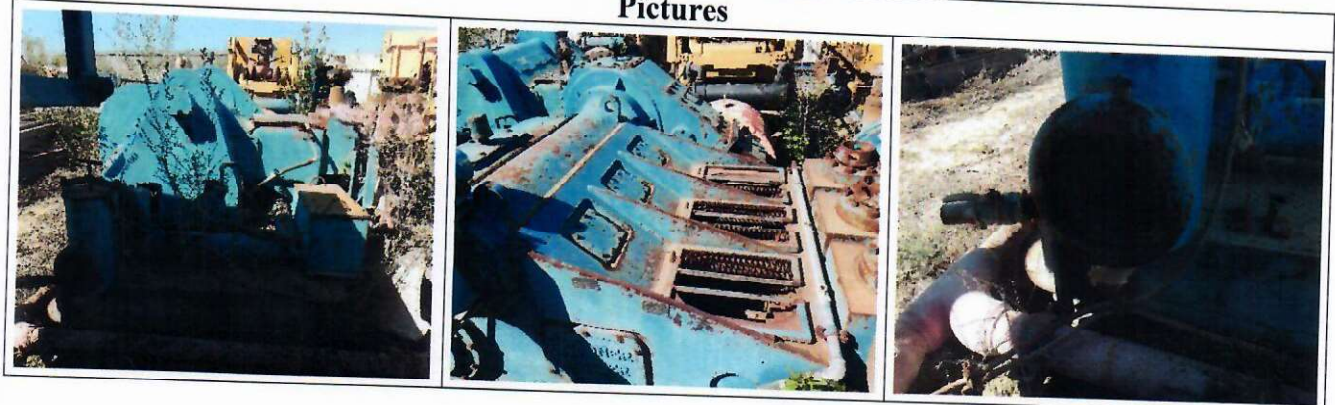
damaged and they have been exposed to weather conditions and must be completely replaced. Broken fuel meter needs to be replaced. Due to lack of proper storage, sandblasting and painting are required.

Diesel generator № 1 Inventory 510-6125 Caterpillar K-900**Pictures****Description**

Maintenance records should be checked and appropriate engine maintenance actions taken. The muffler is severely corroded. Electric cable needs replacement. Some cracks was found on insulation. Drive belts covered with cracks require replacement.

Diesel generator № 2 Inventory 510-50018 Caterpillar K-900**Pictures****Description**

Maintenance records should be checked and appropriate engine maintenance actions taken. An oil leak is visually detected on the lower sump. The muffler is severely corroded. Electrical cable needs replacement. The insulation is covered with cracks. Drive belts covered with cracks require replacement.

High pressure mud pump № 1 Inventory 510-1920**Pictures****Description**

When exposed to weather conditions and without proper storage (conservation), the equipment was found to be corroded in internal assemblies (bearings, gears), the hydraulic part is worn out all in

corrosion. The pump needs a complete disassembly of repairs with the replacement of failed components. Broken pressure gauge needs to be replaced, electrical cables need to be replaced, electric motor needs to be carefully checked, hoses need to be replaced due to weather conditions.

High pressure mud pump № 1 Inventory 510-1909

Pictures



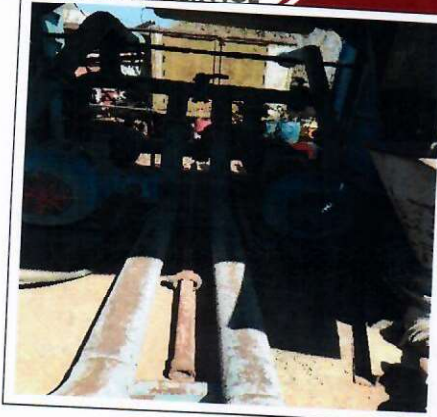
Description

When exposed to weather conditions and without proper storage (conservation), the equipment was found to be corroded in internal assemblies (bearings, gears), the hydraulic part is worn out all in corrosion. The pump needs a complete disassembly of repairs with the replacement of failed components. Broken pressure gauge needs to be replaced, electrical cables need to be replaced, electric motor needs to be carefully checked, hoses need to be replaced due to weather conditions.

Attention! Before work, a complete repair and inspection of the mud pump system for leaks is required. In addition, it is recommended to check the relief valves, the throttle valves have been visually inspected the manifold riser. All systems will require full functional testing prior to commencing work since these mud pump systems are an integral part of an efficient drilling rig.

Centrifugal pumps 2 sets Inventory № 510-000904

№	Pictures	Report



Description

Gate valves are out of order (do not rotate), electric motors need a complete revision. Need to replace some spare parts. Internal and external surfaces are severely corroded; electrical cables need to be replaced.

Air defense unit 13 5/8''-5000 psi № DTC1101 Inventory № 510-00040180

№	Pictures	Report
		

Description

Rust found throughout the hull requires a complete revision. Before operation, testing of the hydraulic part and pressure test is required. API certificate expired.

Drill pipe 3 1/2 '' 180 pieces



Description

Corrosion on the drill pipe surface on all pipes, no threaded safety protectors found. By visual inspection, curved pipes were found in some pipes from the side of the coupling, short length of fit, turnkey. Before work, it is necessary to carry out flaw detection according to DS-1 cat 5 (full cleaning



ZHIGERMUNAISSERVICE

060015, Республика Казахстан, г. Атырау, с/о Геолог,
с. Бірлік, Промышленная зона Телемунара, 19.

+7 7122 76 33 95
+7 7122 76 33 96
reception@zms.kz
www.zms.kz

cycle of the outer surface, complete measurement of pipes, thickness measurement, magnetic particle inspection and ultrasound).

Note:

The drilling rig after a long downtime requires a thorough NDE check of all elements, statistical and dynamic test of lifting mechanisms, replacement of all electrical cables, replacement of all rubber parts, inspection and possibly replacement of bearings, sandblasting and painting of the drilling rig, certification of the drilling rig.

No BHA was found on the rig, no elevators, slips were found, no links were found, etc.

TENDER PARTICIPANT STATEMENT WITH REFERENCE TO SANCTIONS IMPOSED WITH REFERENCE TO THE INVASION OF RUSSIAN FEDERATION ON UKRAINE AND WITH REFERENCE TO OTHER CONFLICTS

1. REPRESENTATIONS OF THE TENDER PARTICIPANT (THE BUYER)

1.1. The Buyer declares that, to the best of its knowledge, as at the date of the bid submission, it and its subsidiaries, parent companies and members of its bodies and persons acting on its behalf:

1.1.1. are in compliance with the sanctions regulations introduced by the Republic of Poland, the United Nations and the European Union, (the "Sanctions Regulations");

1.1.2. are not subject to any sanctions, including economic sanctions, trade embargoes or other restrictive measures imposed under the Sanctions Regulations and are not legal or natural persons with whom the Sanctions Regulations prohibit transactions (hereinafter: the "Sanctioned Entity");

1.1.3. are not directly or indirectly owned or controlled by legal or natural persons meeting the criteria described in sec. 11.1.2 above;

1.1.4. do not reside or have their registered office or principal place of business in a state being subject of Sanctions Regulations or are not incorporated under the laws of a state being subject to Sanctions Regulations;

1.1.5. are not involved in any proceedings or investigations against them in relation to a breach of any Sanctions Regulations.

1.2. TENDER PARTICIPANT (THE BUYER) UNDERTAKES:

1.2.1. it and its subsidiaries and the members of its bodies and persons acting on its behalf and for its benefit conduct themselves in accordance with the Sanction Regulations;

1.2.2. the items purchased under the agreement will not be directly or indirectly available to the Sanctioned Entity or used for the benefit of the Sanctioned Entity or used by the Buyer to the extent that such action is not permitted under the Sanctions Regulations;

1.2.3. in the event that any statement made in sec. 11.1 becomes untrue, it shall, unless prohibited by law, promptly, but in any event within 30 days of becoming aware of such event, inform the Seller of each such event and of the steps taken to restore the truth of such statements;

1.2.4. shall indemnify the Seller for any damage caused by any acts or omissions of the Buyer, its subsidiaries, parent companies and members of its bodies and persons acting on its behalf and for its benefit in connection with the non-performance or improper performance of the obligations referred to in this sec. 11.2.

TENDER PARTICIPANT DETAILS: _____

PERSON/S ENTITLED TO SIGN STATEMENT ON BEHALF OF TENDER PARTICIPANT WITH THE _____

POSITION: _____

DATE OF SIGNATURE: _____

SIGNATURE: _____